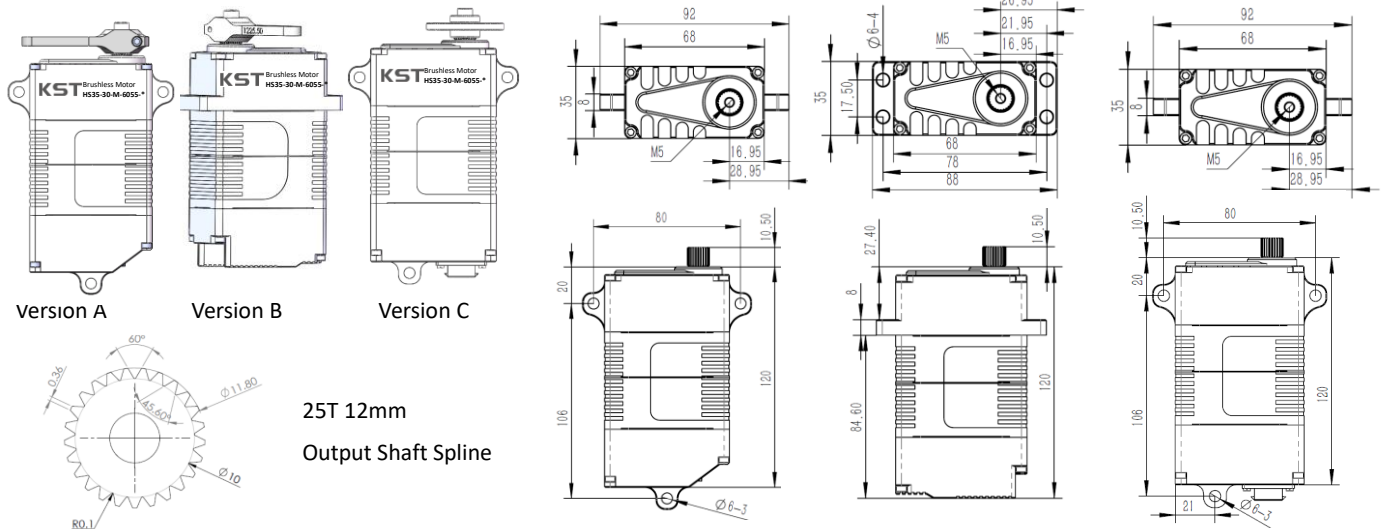


### HS35-30-M-6055-x Technical Specification



### 1. Servo Data

Rated Voltage	DC30V	
Voltage Range	DC24V-32V	
Stalling Torque	300Kgf.cm@30V	
Rated Torque	120Kgf.cm@30V	
Stalling Current	5.00A	
Rated Current	1.95A	
No-load Speed	220°/s @25°C/30V	
Rated Speed	150°/s @25°C/30V	
Default Travel Angle	±100° = 200° total travel	
Operating Temperature Range	-30°C .....+65°C	
Case Material	Aluminum Alloy 7075	
Motor Type	Brushless DC Motor	
Gear Set Material	Hardened Steel	
Position Sensor	Contactless	
Shielded Connecting Cable	J30J-15TJL/1500mm	
Ball Bearing	6BB	
Version A&C	Case Dimensions	68mm*35mm*120mm(±)
	Weight	680g(±10%)
Version B	Case Dimensions	68mm*35mm*120mm(±)
	Weight	680g(±10%)

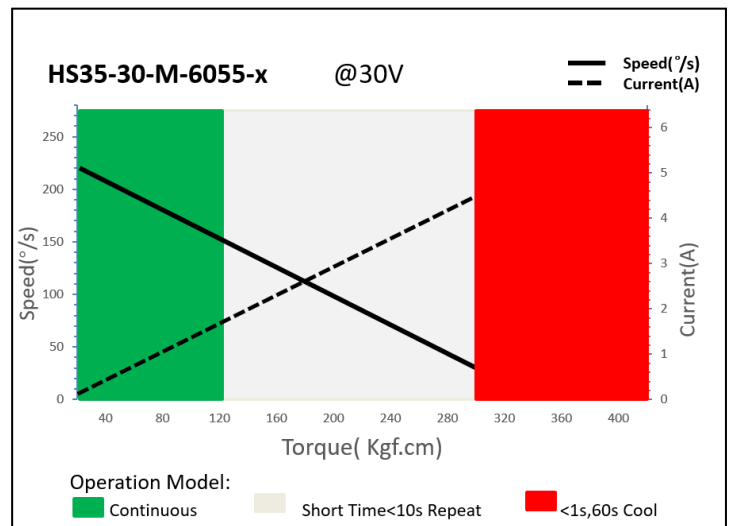
### 3.2 RS485 / RS422 Command Interface

Baud-Rate	115200 ±1.5% bits/s
Protocol (Documentation available)	10 Byte (incl. 1 byte Check Sum)

#### 3.2.1 RS485 / RS422 Protocol Specifications

Number of Data Bits	8
Number of Stop Bits	1
Parity	None

### 2. Performance



### 3. Command Signal

#### 3.1 PWM Command Interface

Signal Voltage	HIGH:min.3.3V,max.5.0V Low:min.0.0V,max.1.5V
Pulse Lengths	500us-2500us
Pulse Lengths for Position	500us/1500us/2500us -100% 0°/+100°

#### Command / Response Frame

Byte #	Description	Byte #	Description
1	Frame Head(0xFE)	6	Data
2	Version(0xCA)	7	Data
3	Address	8	Data
4	Command code	9	Check Sum
5	Data	10	(0A)Frame End

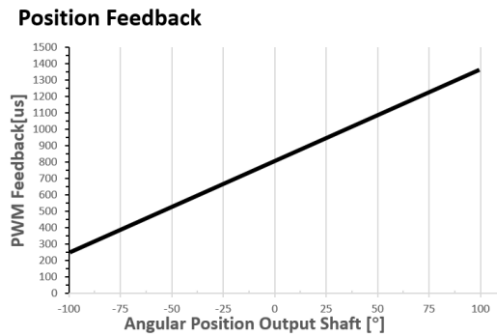
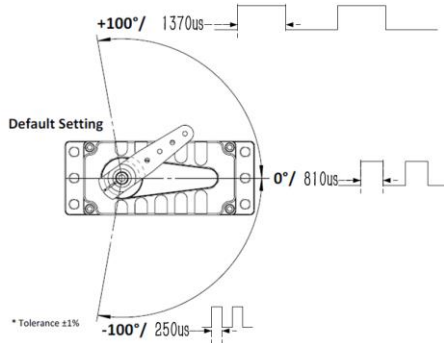
### 3.3 CAN Bus Command Interface

Baud-Rate	500Kbps	Communication	3.1: CAN Open standard frame 3.2: CAN Extended frame
Node number	0 x25 (range 1 ~ 127, 0 is radio)		

### 3.4. Feedback Signal

#### 3.4.1 Position Feedback Signal (PWM Versions)

The Position Feedback signal is an output signal with a square wave which is directly related to the output shaft's angular position. Reference is Supply Ground.



#### 3.4.2 Feedback Value (Bus Version)

Integrated in the Bus protocol a Feedback Value, including the Angle position, Temperature, current value. Value read by sending request command. Provide the details of the bus in the document.

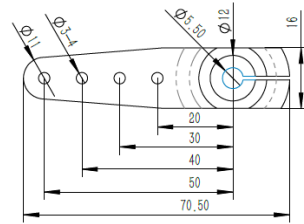
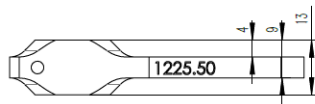
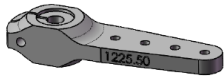
### 4. Industrial Standard J30J-15ZKP electrical Connector Pin Assignment

Pin No.	Assignment PWM		Assignment RS485		Assignment CAN		Assignment RS422	
	Pin No.	Signal	Pin No.	Signal	Pin No.	Signal	Pin No.	Signal
1	1	DC +	1	DC +	1	DC +	1	DC +
2	2	Supply Voltage	2	Supply Voltage	2	Supply Voltage	2	Supply Voltage
3	3	DC- Supply Ground	3	DC- Supply Ground	3	DC- Supply Ground	3	DC- Supply Ground
4	4	Do not connect	4	NC	4	NC	4	NC
5	5	PWM Command Signal	5	Do not connect	5	Do not connect	5	NC
6	6	FeedBack Signal	6	RS485A	6	CAN High	6	TX+
7	7	Signal GND	7	RS485B	7	CAN Low	7	TX-
8	8		8		8		8	RX+
9	9		9		9		9	RX-

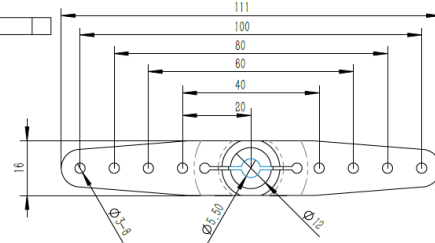
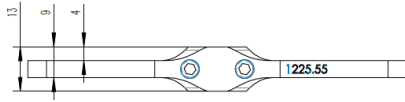
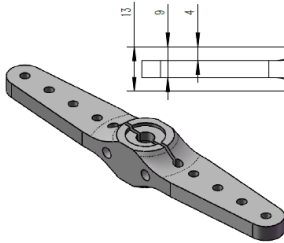
### 5. Accessories List

Model	Output Shaft Spline	Item	Item No.
HS35-30-M-6055-x	25T 12mm	Aluminum Servo Arm (Single side)	1225.50
		Aluminum Servo Arm (Double side)	1225.55
		Aluminum Servo Disc	1225.16.5

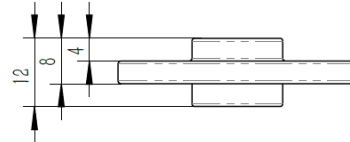
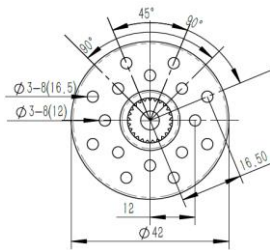
**Item No.: 1225.50**



**Item No.: 1225.55**



**Item No.: 1225.16.5**



### 6. Item Number System

