



PARTS CATALOG FOR MTA-4 MONSTER TRUCK

No.6228-F

MTA4 



**1/8 4WD NITRO
MONSTER TRUCK**

Manufactured by **THUNDER TIGER CORPORATION**

<http://www.thundertiger.com>

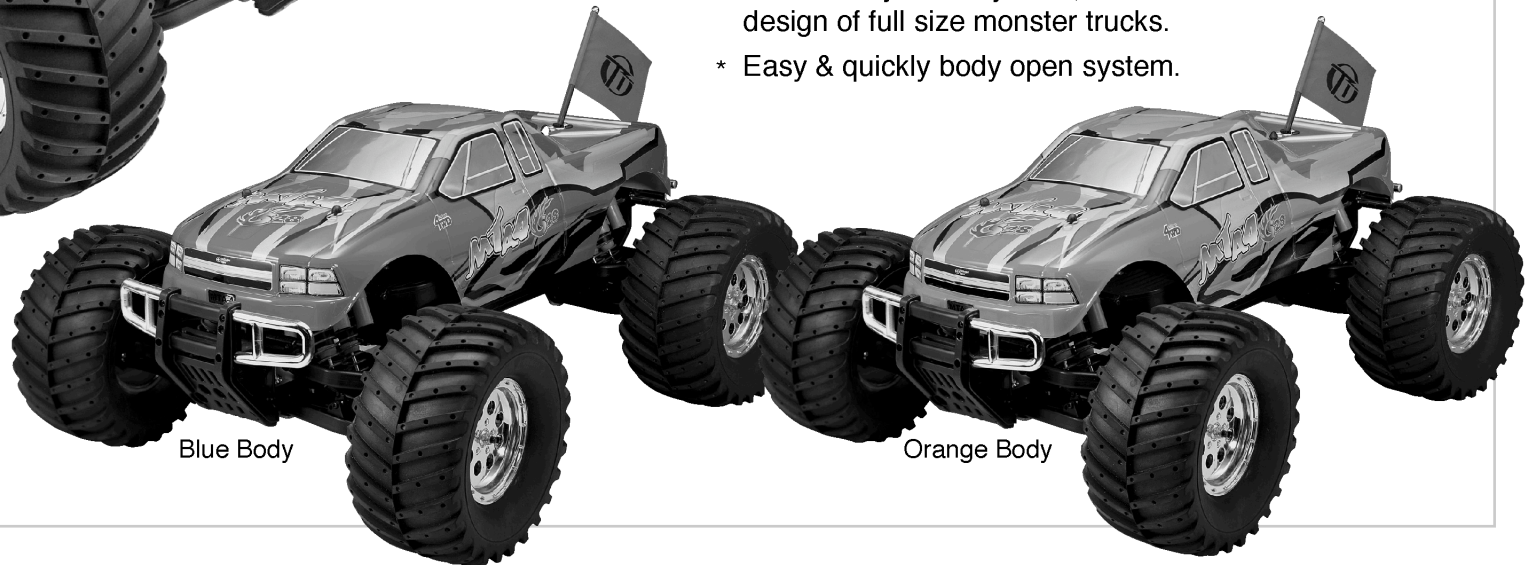


MTA4 ²⁸

1/8 4WD NITRO MONSTER TRUCK



THUNDER TIGER
PRO-28BD-R ENGINE



Blue Body

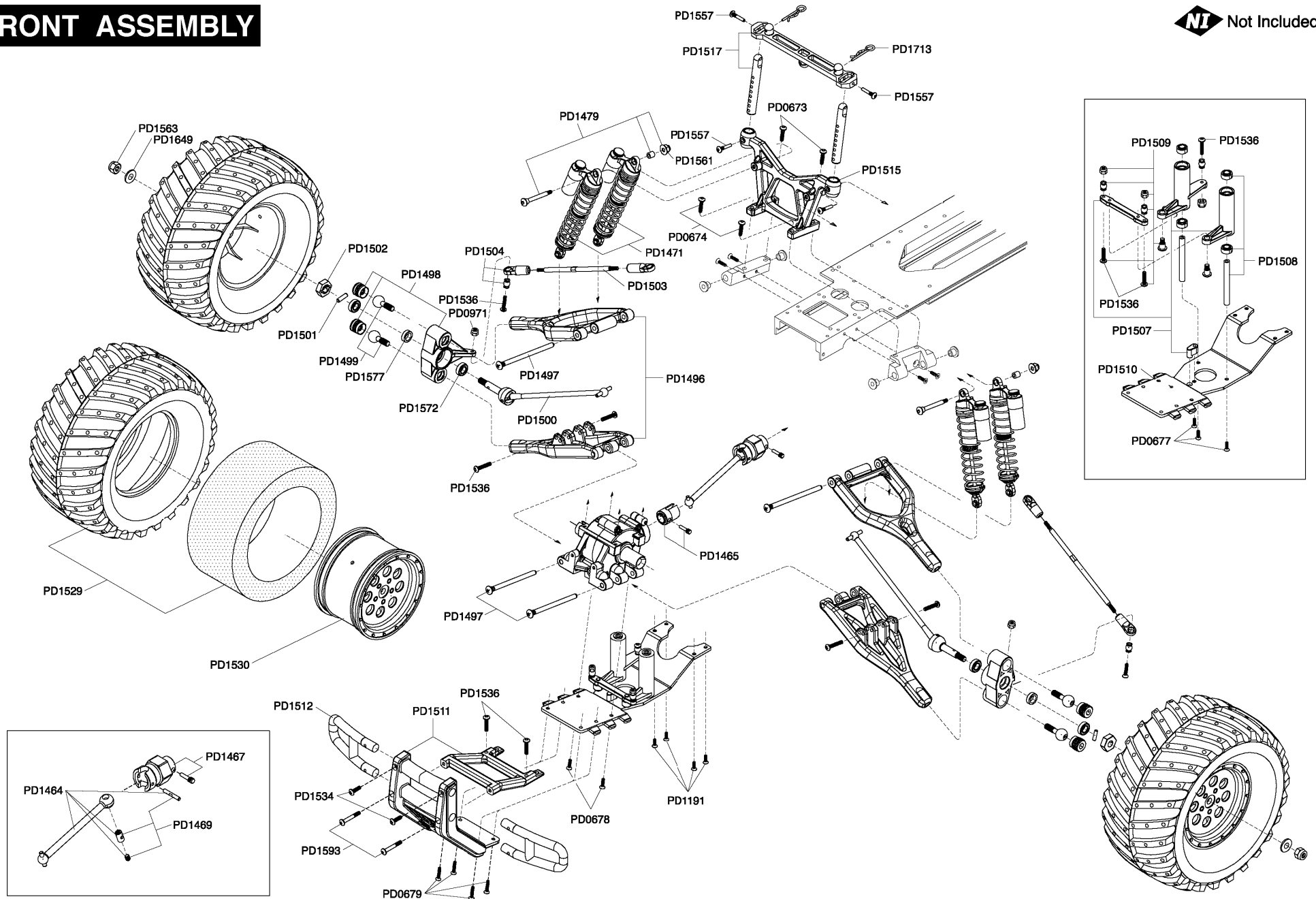
Orange Body

Features

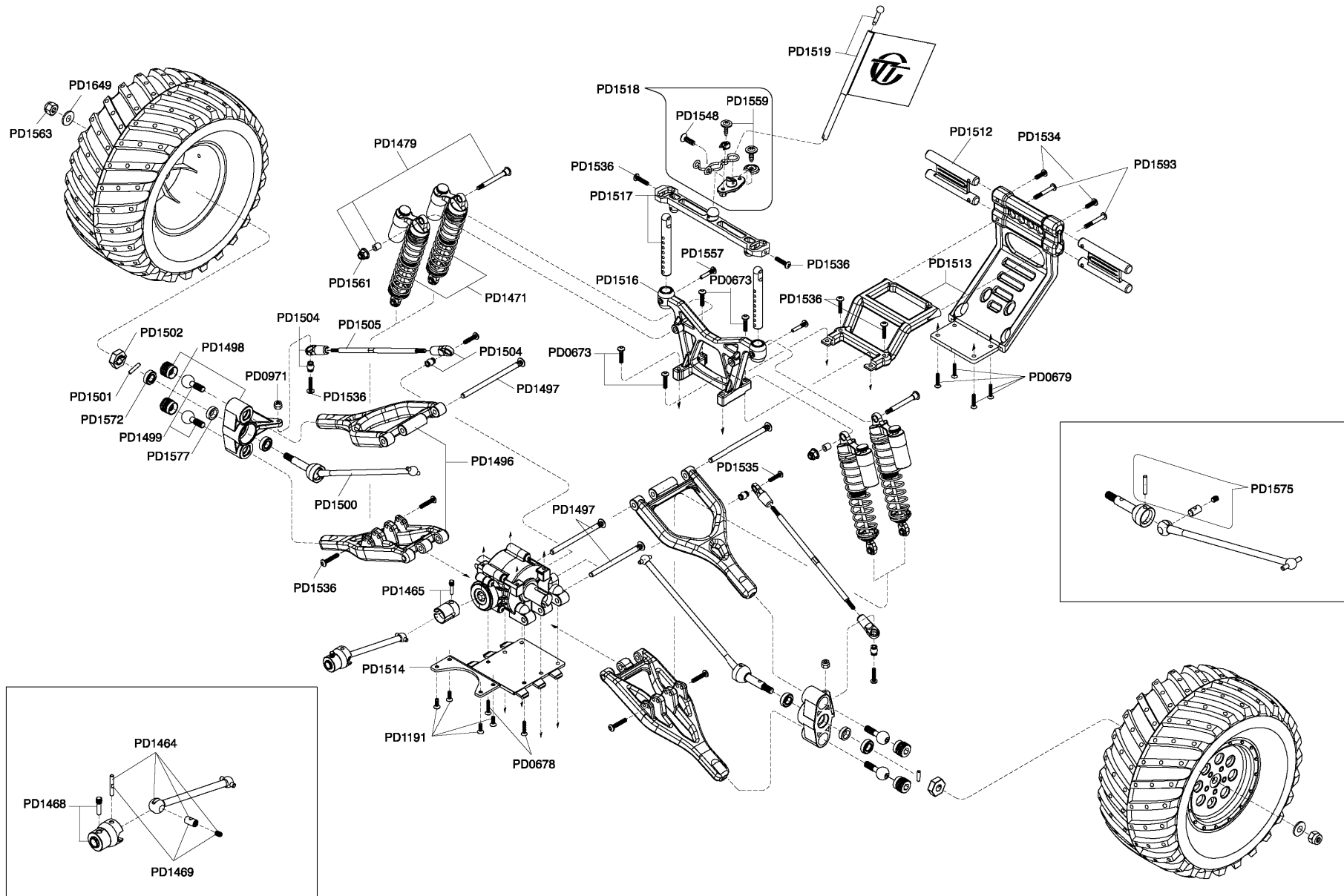
- * Super brutal Pro-28 (4.6cc) size engine that has two different starting methods (pull start and hex shaft start).
- * A very rigid, extruded aluminum channel chassis was used to handle the stress of the long travel suspension and high power of the .28 size engine.
- * Reliable, two-speed, adjustable automatic shifting, forward and reverse transmission.
- * Long travel suspension is controlled by 8 adjustable oil damped shocks which handle jump heights in excess of 2 meter.
- * One piece electronic equipment container unit.
- * The large, non-stopping fuel tank features a dual fuel-pick-up system.
- * Fuel line with primer pump.
- * High impact absorbing front and rear bumpers protect the chassis and suspension during hard landings and tumbles.
- * Realistic styled body shell, wheels and tires match the design of full size monster trucks.
- * Easy & quickly body open system.

FRONT ASSEMBLY

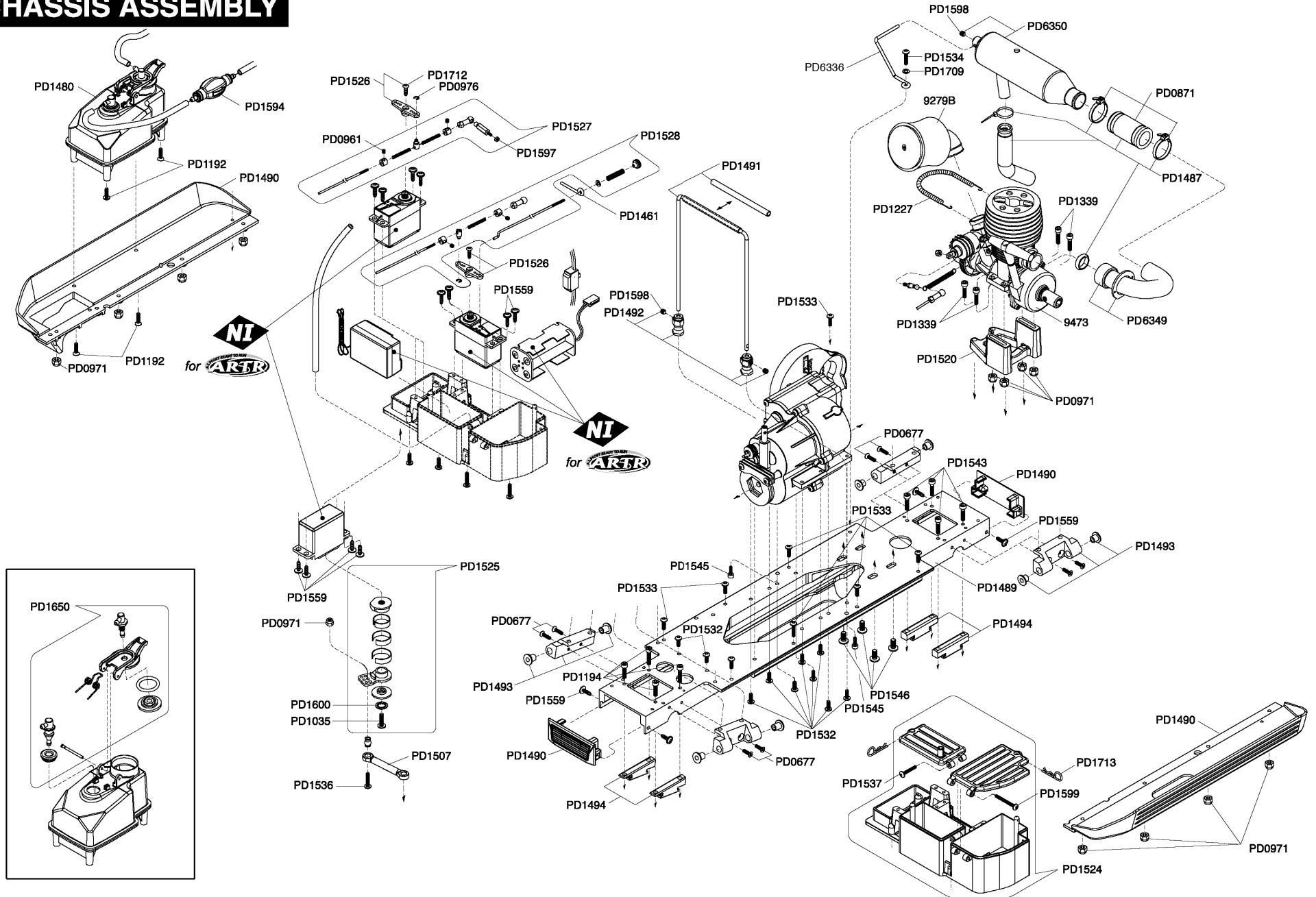
NI Not Included



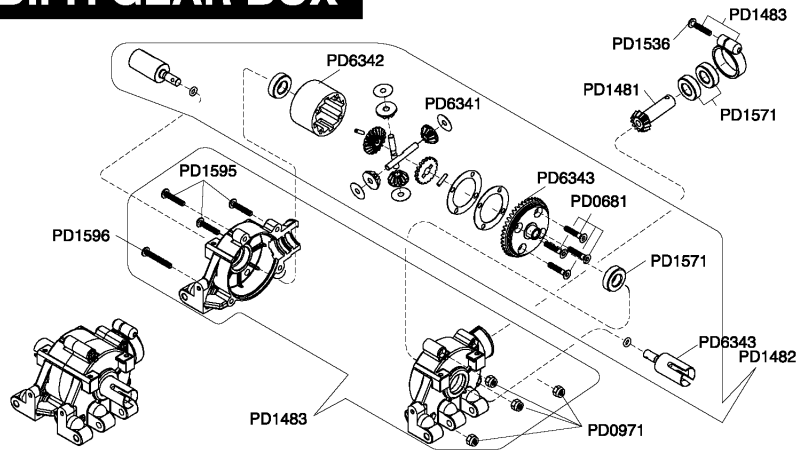
REAR ASSEMBLY



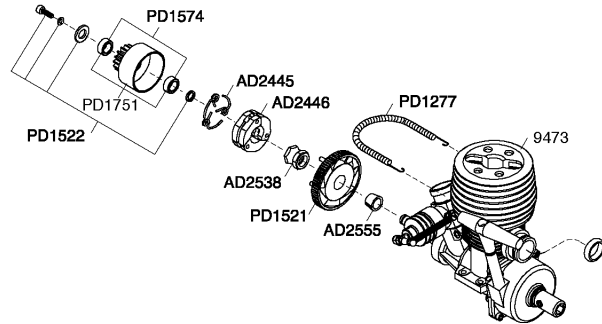
CHASSIS ASSEMBLY



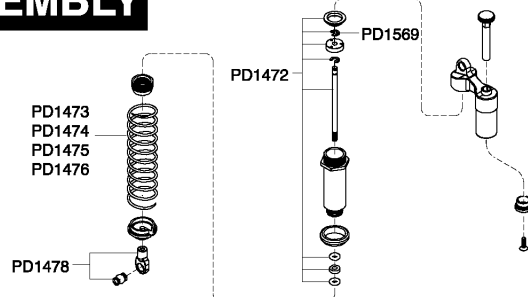
DIFF. GEAR BOX



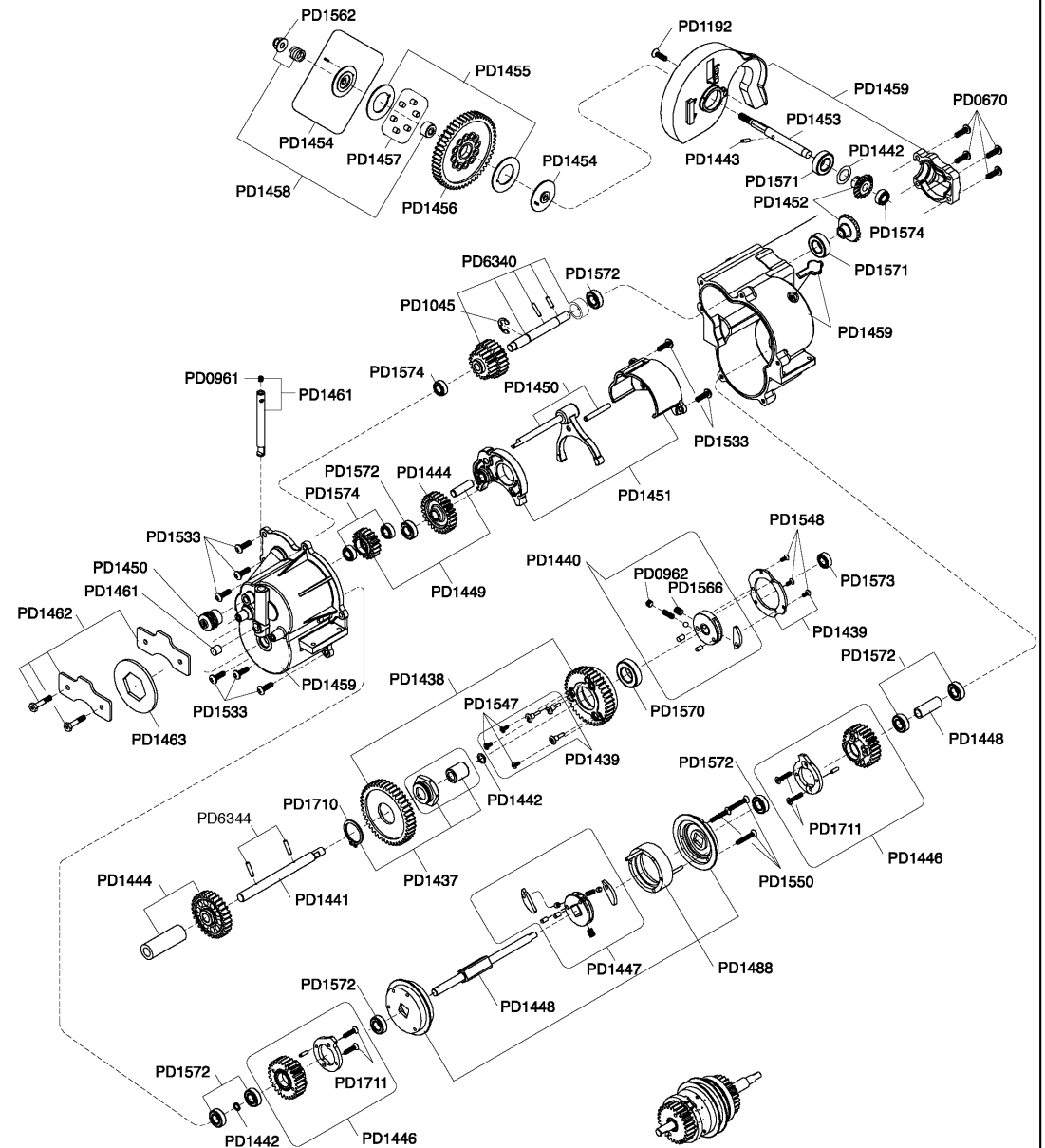
ENGINE ASSEMBLY



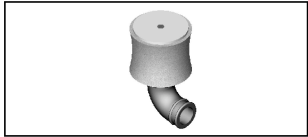
SHOCK ASSEMBLY



CTR TRANSMISSION GEAR BOX



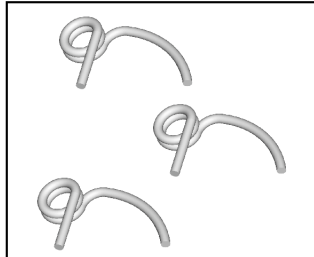
MTA-4 PARTS LIST



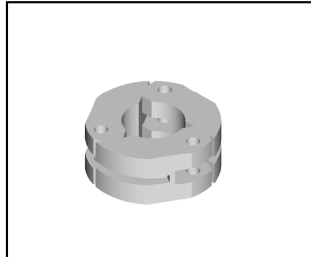
9708W AIR FILTER, 1/8 WHITE



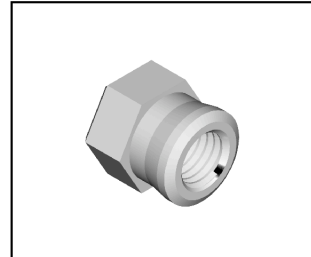
AN1771 FOAM FILTER (3), 1/8



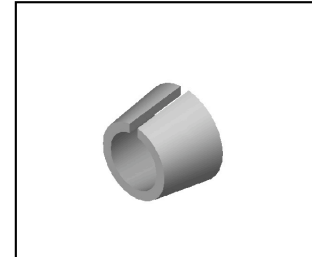
AD2445 CLUTCH SPRING (3), 21



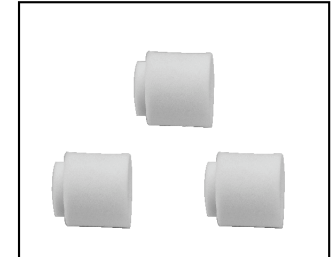
AD2446 CLUTCH SHOE (3), 21



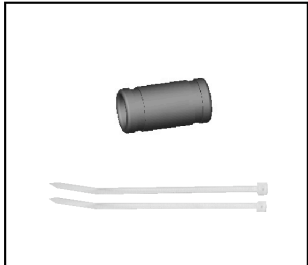
AD2538 CLUTCH NUT, 21



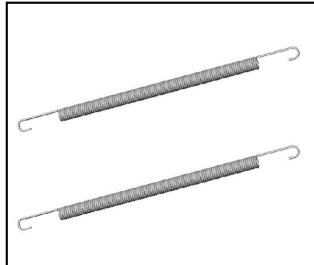
AD2555 FLYWHEEL COLLET, 21



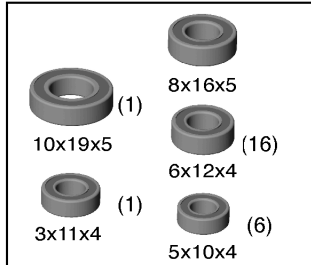
AN1771 FOAM FILTER (3), 1/8



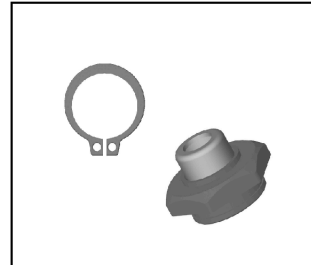
PD0871 COUPLER TUBE



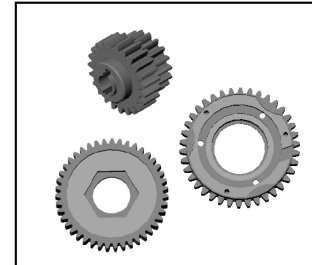
PD1227 MANIFOLD SPRING, MTA4



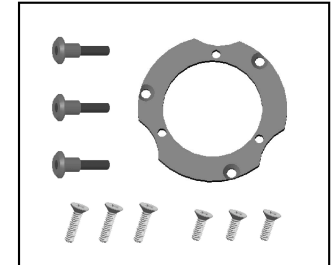
PD1436 BEARING SET, MTA4



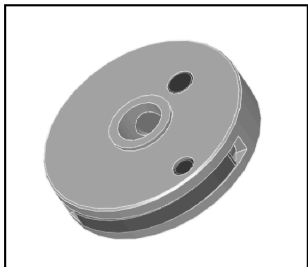
PD1437 2 SPD ONE WAY HUB, MTA4



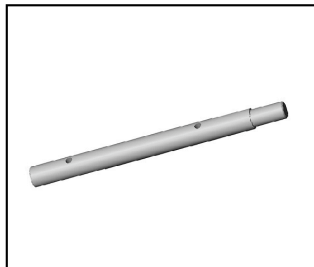
PD1438 2 SPD MAIN GEARS, MTA4



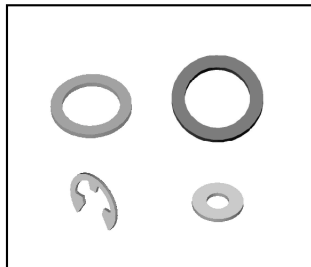
PD1439 SUPPORT PIN&RING, MTA4 M3X12



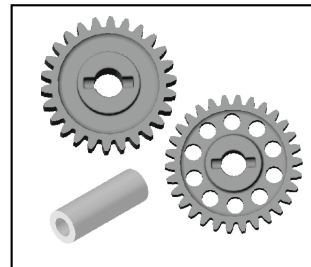
PD1440 2 SPD CLUTCH HUB, MTA4



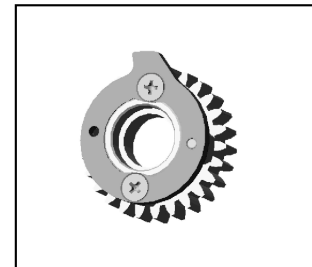
PD1441 2 SPD SHAFT, MTA4



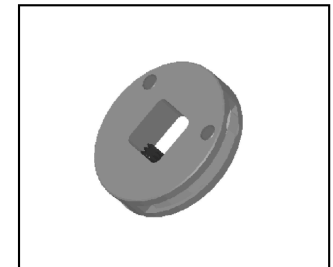
PD1442 CTR TRANS SHIM & CLIP, MTA4



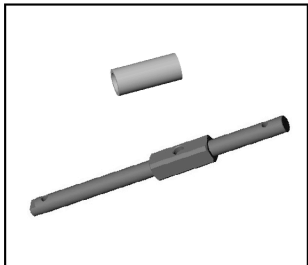
PD1444 FWD/REV DRIVE GEARS, MTA4



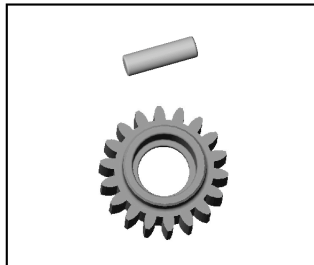
PD1446 FWD/REV SHIFT GEARS, MTA4



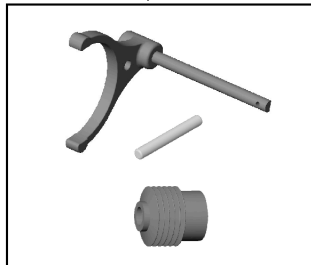
PD1447 FWD/REV CLUTCH HUB, MTA4



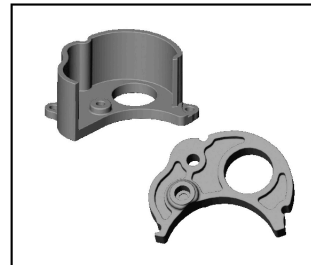
PD1448 FWD/REV MAIN SHAFT, MTA4



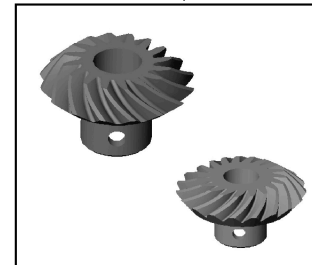
PD1449 REV IDLE GEAR & SHAFT, MTA4



PD1450 SHIFT LEVER, MTA4



PD1451 REV GEAR/SHIFT FORK MNT

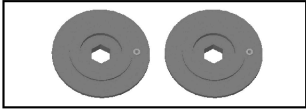


PD1452 BEVEL GEAR SET, MTA4

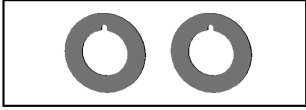


PD1453 SLIPPER SHAFT, MTA4

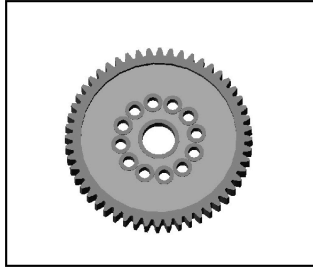
MTA-4 PARTS LIST



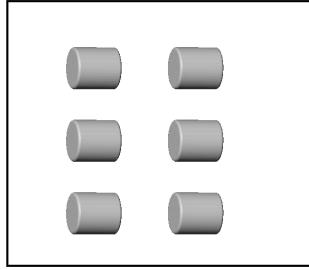
PD1454 SLIPPER HUB, MTA4



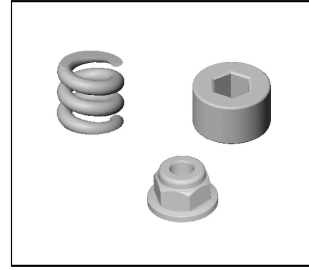
PD1455 SLIPPER RING, MTA4



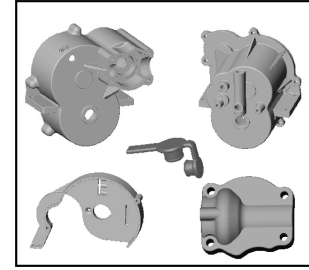
PD1456 MAIN SPUR GEAR, 52T
MTA4



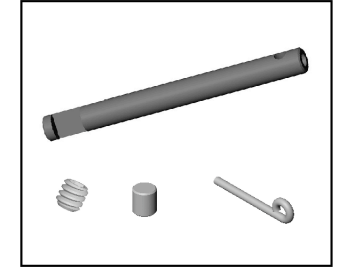
PD1457 SLIPPER FRICTION
PEGS, MTA4



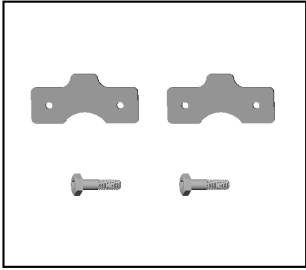
PD1458 SLIPPER HARDWARE,
MTA4



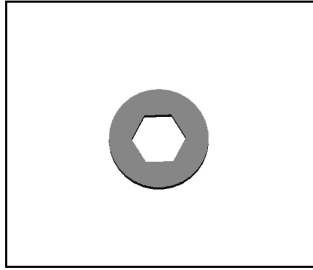
PD1459 CTR TRANSMISSION
CASE, MTA4



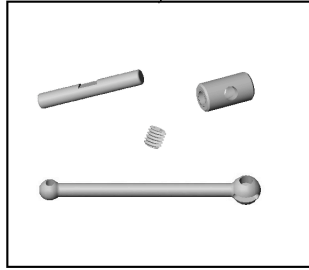
PD1461 BRAKE CAM &
HARDWARE, MTA4



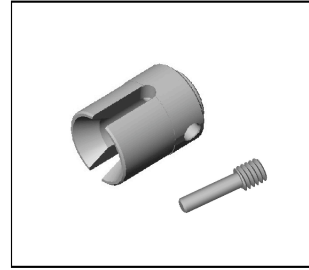
PD1462 BRAKE PADS &
SCREWS, MTA4



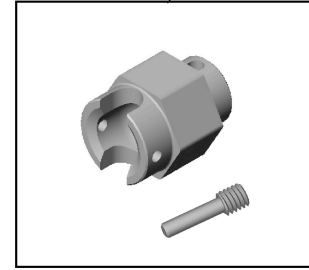
PD1463 BRAKE DISCS - MTA4



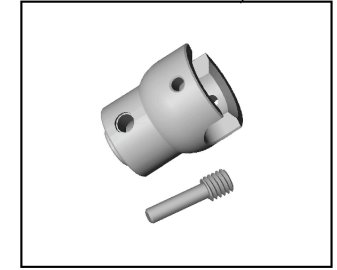
PD1464 F/R DRIVE CVA



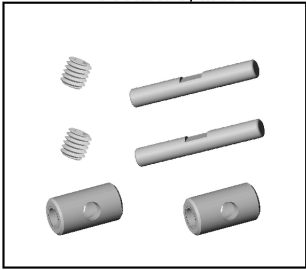
PD1465 F/R DRIVE INPUT CUP



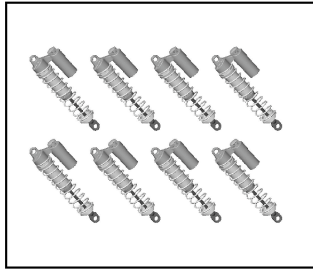
PD1467 F DRIVE / DISC
BRAKE HUB



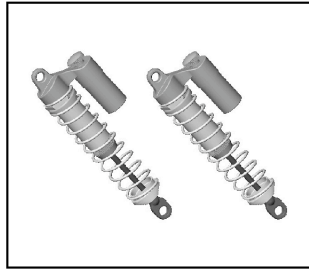
PD1468 REAR DRIVE OUTPUT
CUP



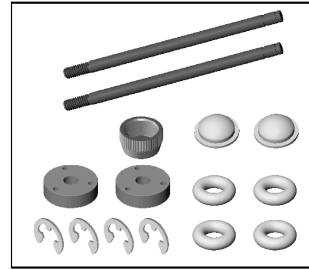
PD1469 F/R CVA REBULID KIT



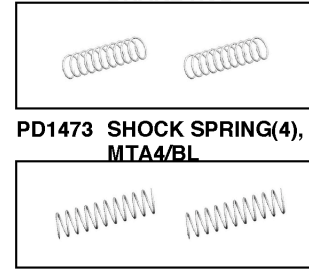
PD1470 ASSEMBLED SHOCK
(8), MTA



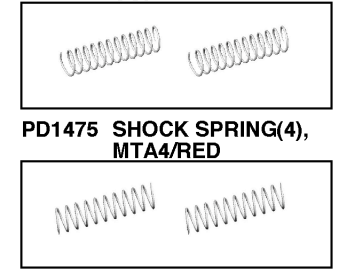
PD1471 ASSEMBLED SHOCK
(2), MTA4



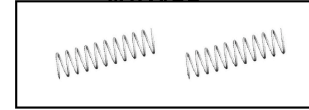
PD1472 SHOCK REBUILD KIT
(2), MTA4



PD1473 SHOCK SPRING(4),
MTA4/BL



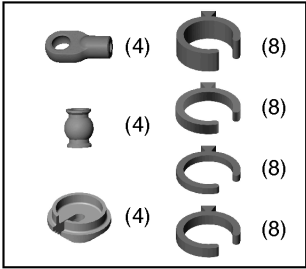
PD1475 SHOCK SPRING(4),
MTA4/RED



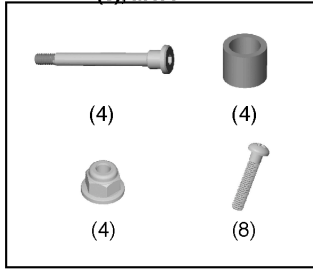
PD1474 SHOCK SPRING(4),
MTA4/GL



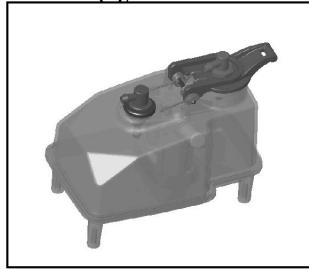
PD1476 SHOCK SPRING(4),
MTA4/CU



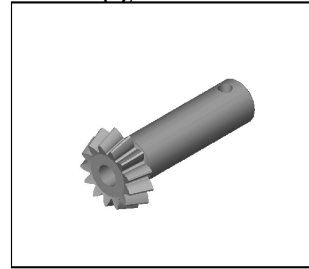
PD1478 SHOCK ENDS, MTA4



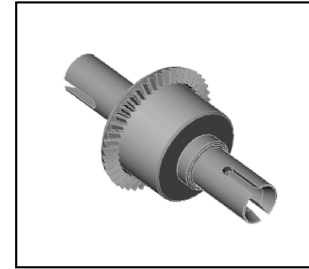
PD1479 SHOCK TOP MOUNTS,
MTA4



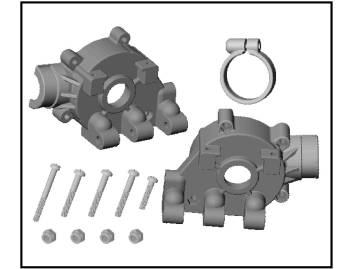
PD1480 FUEL TANK, MTA4



PD1481 DIFF SHAFT/PINION,
MTA4

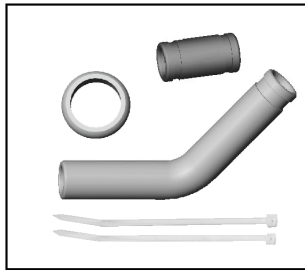


PD1482 DIFF SET, MTA4

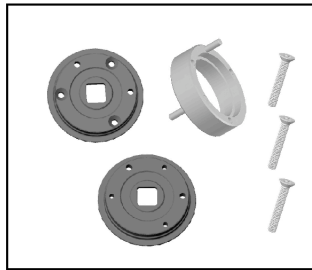


PD1483 DIFF CASE/BULKHEAD,
MTA4

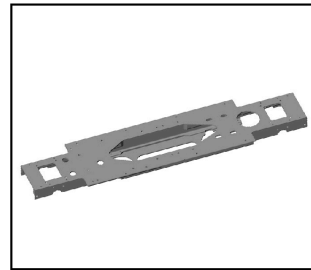
MTA-4 PARTS LIST



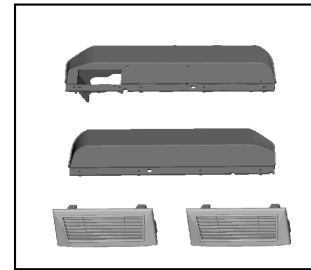
PD1487 ORING, TUBE & OUTLET, MTA4



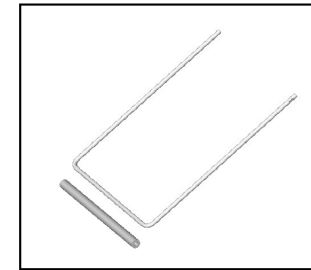
PD1488 FWD/REV CLUTCH HOU., MTA4



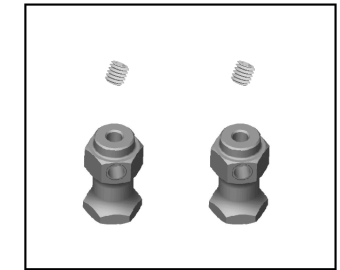
PD1489 CHASSIS, MTA4



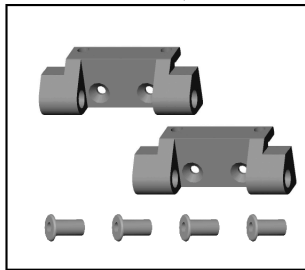
PD1490 CHASSIS GUARD & COVER, MTA4



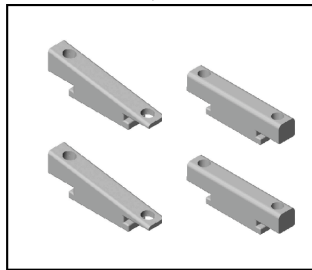
PD1491 ROLL BAR, MTA4



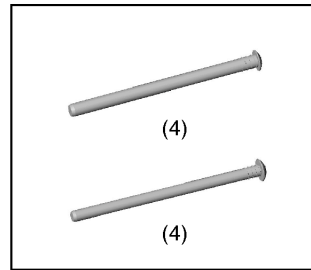
PD1492 ROLL BAR MOUNTS, MTA4



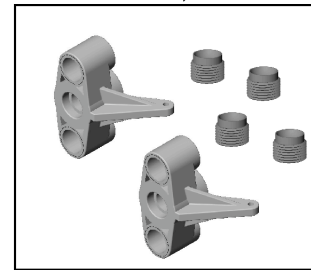
PD1493 UP SUSP. ARM MOUNTS, MTA4



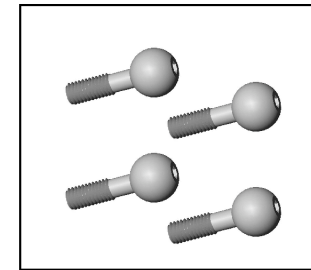
PD1494 FR BULK / CHASSIS MOUNT, MTA4



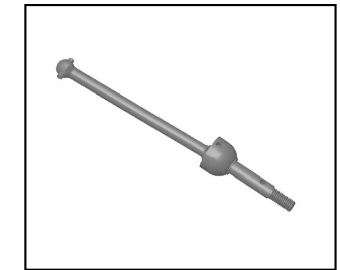
PD1497 SUSP. HINGE PIN SET, MTA4



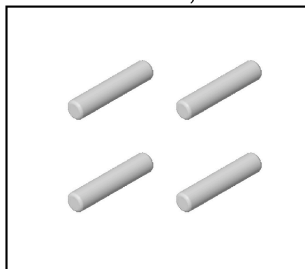
PD1498 KNUCKLE / HUB, MTA4



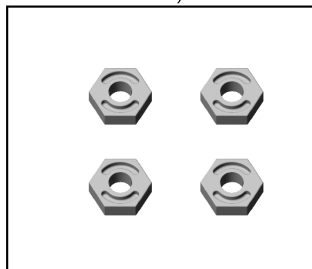
PD1499 ADJUST BALL (4), 10.8mm



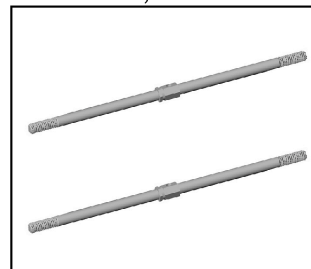
PD1500 BALL TYPE UNIVERSAL, MTA4



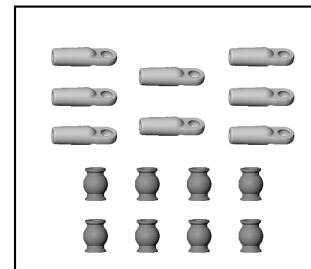
PD1501 STEEL PIN (4), 2.5X5mm



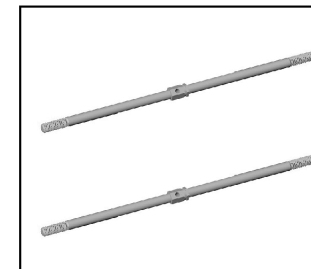
PD1502 WHEEL HEX DRIVE (4), MTA4



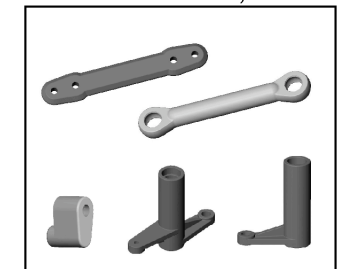
PD1503 FR TURNBUCKLE, 4X110mm



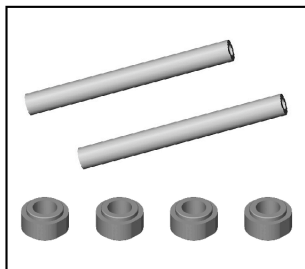
PD1504 F/R TURNBUCKLE END, MTA4



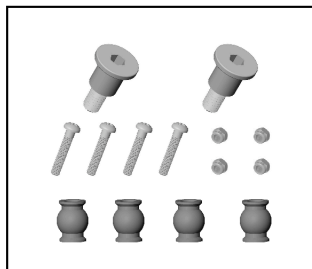
PD1505 RR TURNBUCKLE, M4X126mm



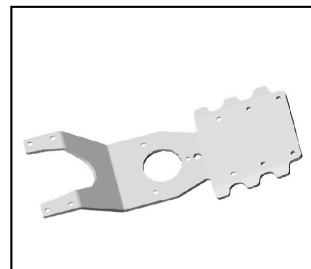
PD1507 BELLCRANK PL. PARTS, MTA4



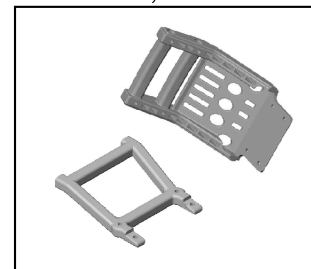
PD1508 BELLCRANK POST & BUSH, MTA4



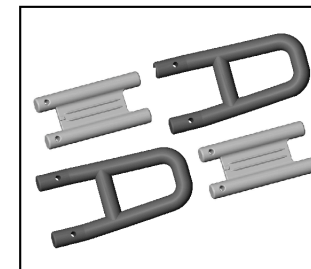
PD1509 BELLCRANK HARDWARE, MTA4



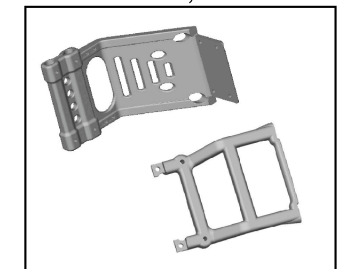
PD1510 FR SKID PLATE, MTA4



PD1511 FR BUMPER & BRACE, MTA4

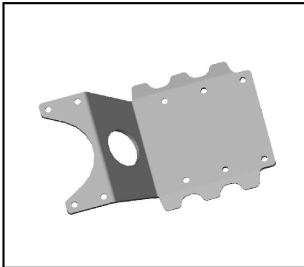


PD1512 FR&RR BUMPER, MTA4

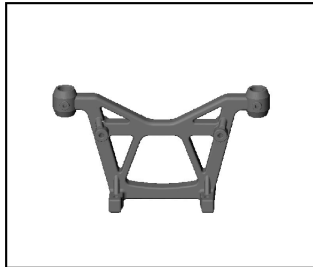


PD1513 RR BUMPER & BRACE, MTA4

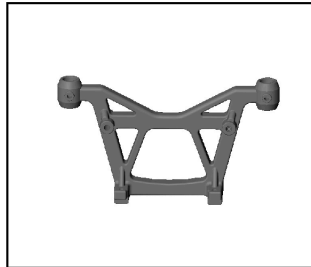
MTA-4 PARTS LIST



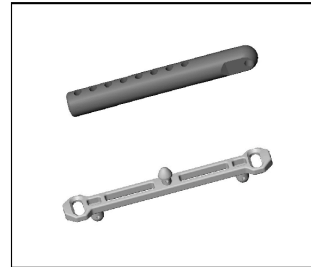
PD1514 RR SKID PLATE, MTA4



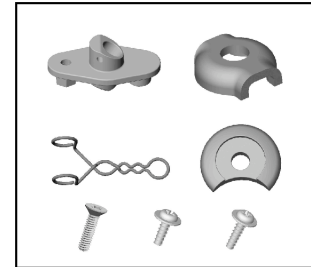
PD1515 FR SHOCK TOWER, MTA4



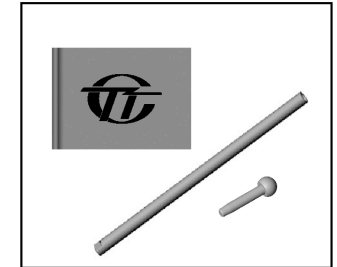
PD1516 RR SHOCK TOWER, MTA4



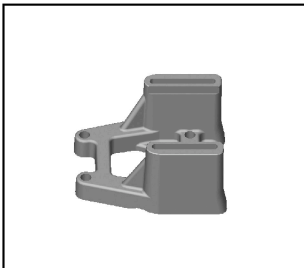
PD1517 BODY MOUNTS & POSTS, MTA4



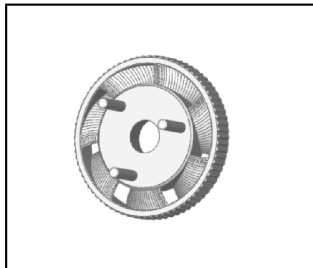
PD1518 RR CLIP&FLAG MOUNT, MTA4



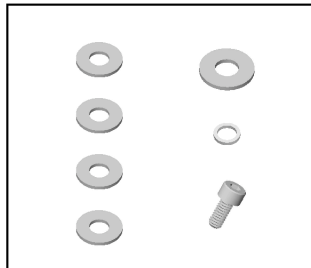
PD1519 RR FLAG & POSTS, MTA4



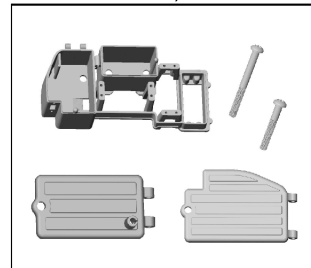
PD1520 ENGINE MOUNT, MTA4



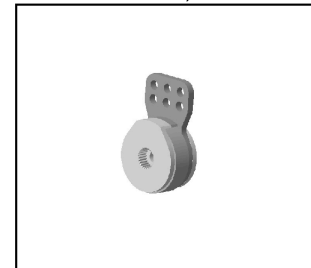
PD1521 3-SHOE FAN FLYWHEEL, 21



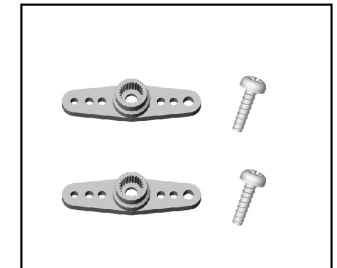
PD1522 CLUTCH HARDWARE, 21



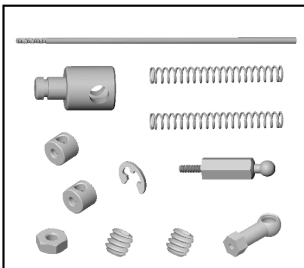
PD1524 RADIO TRAY, MTA4



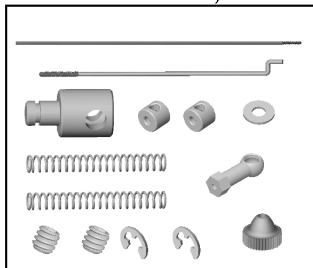
PD1525 SERVO SAVER, MTA4



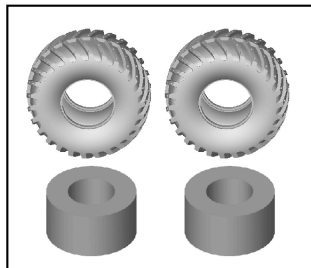
PD1526 SERVO HORNS, MTA4



PD1527 GEAR SHIFT LINKAGE, MTA4



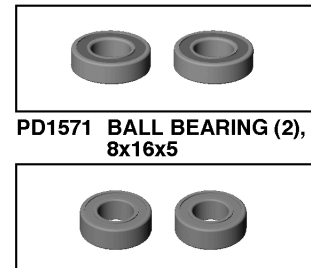
PD1528 THRO/ BRAKE LINKAGE, MTA4



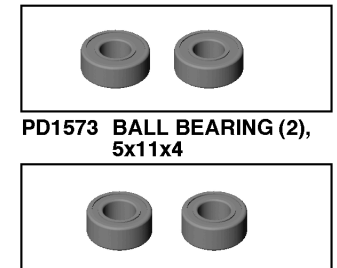
PD1529 TIRES (2), MTA4



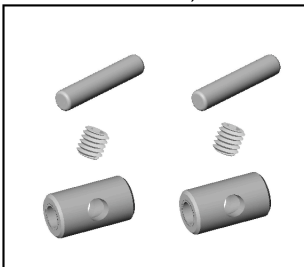
PD1530 WHEELS (2), MTA4



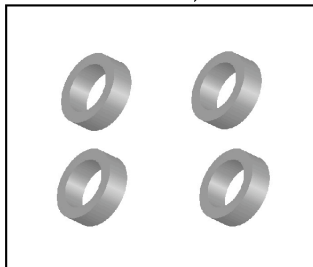
PD1571 BALL BEARING (2), 8x16x5



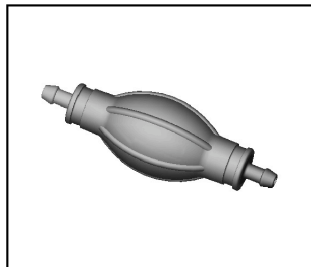
PD1573 BALL BEARING (2), 5x11x4



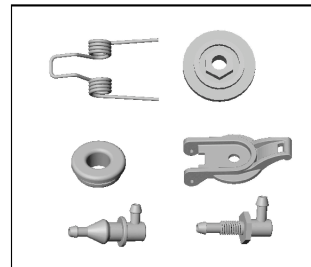
PD1575 UNIV. REBUILD KIT, MTA4



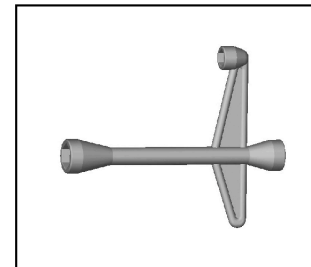
PD1577 AXLE BEARING SAPCER



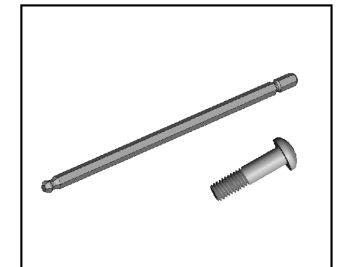
PD1594 FUEL PRIMER PUMP



PD1650 FUEL TANK ACC, MTA

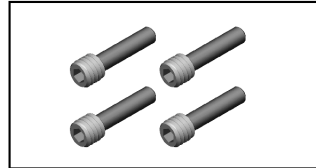


PD1714 NUT WRENCH

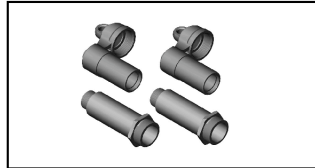


PD1715 BALL HEX DRIVE SHAFT, 6mm

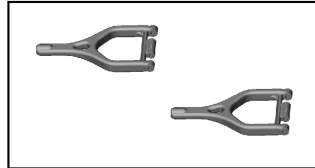
MTA-4 PARTS LIST



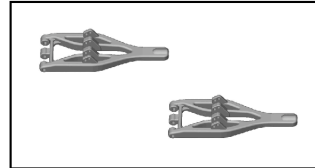
PD1740 DRIVE CUP SET SCREW



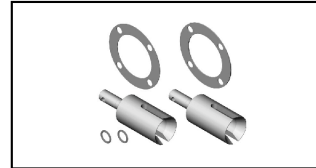
PD1743 MGT Shock Body and Cap



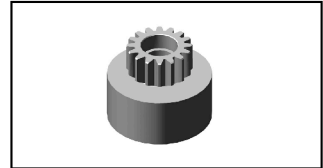
PD1745 UPR. SUSPN ARMS(2) MTA4



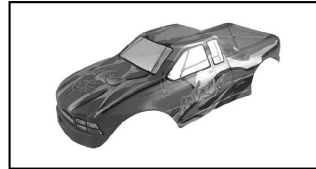
PD1746 UPR. SUSPN ARMS(2) MTA4



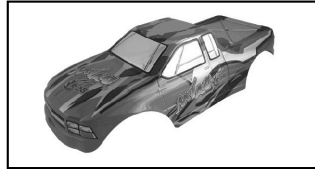
PD1749 MGT Differential Outdrives and Gaskets



PD1751 CLUTCH BELL,16T



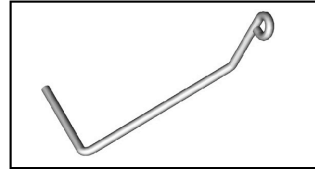
PD6330 PRINTED BODY W/D(L)S28



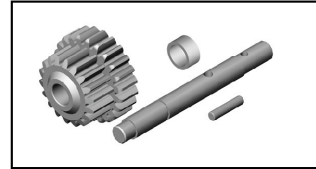
PD6333 PRINTED BODY W/D(O)S28



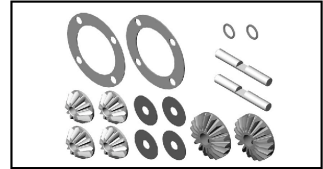
PD6335 CLEAR BODY W/D, MTA4 S28



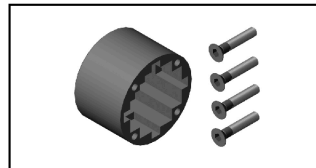
PD6336 MUFFLER MOUNT WIRE/R,MTA SPT



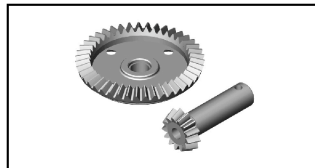
PD6340 2Speed Pinon & Shaft set



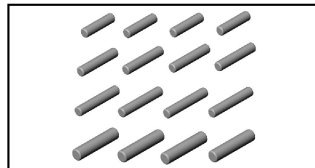
PD6341 DIFF GEARS



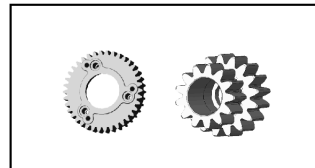
PD6342 DIFF HOUSING



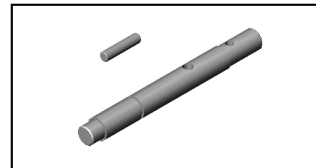
PD6343 DIFF SPUR



PD6344 CTR TRANS PINS, MTA4



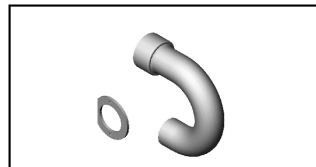
PD6346 2-SPEED PINIONS & SPURS



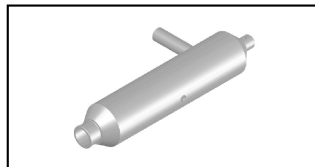
PD6347 DRIVE PINION SHAFT, MTA4



PD6348 Gear Box Set, MTA4



PD6349 MUFFLER, MTA4



PD6350 MUFFLER, MTA4

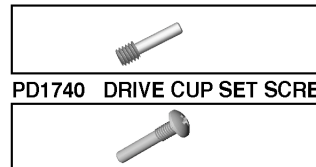
	M3 x 10mm (8)
	M3 x 14mm (4)
	M3 x 10mm (1)
	M3 x 8mm (8)

PD1460 CTR TRANS CASE SCREWS, MTA4

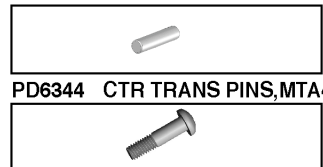
	PD0670 M3x 14mm(20) PD0673 M3x 20mm(20) PD0674 M3x 22mm(20) PD1035 M3x 10mm(20)
	PD0677 M3x 8mm(20) PD0678 M3x 10mm(20) PD0679 M3x 12mm(20) PD0681 M3x 16mm(20)

BT MACHINE SCREW

CT MACHINE SCREW



PD1740 DRIVE CUP SET SCREW



PD6344 CTR TRANS PINS,MTA4

	PD0961 M3x 3mm (20) PD0962 M4x 3mm (20) PD1565 M4x 5mm (20) PD1566 M4x 8mm (20) PD1598 M4x 4mm (20)
--	---

SET SCREW

	PD0976 2mm (20) PD1045 5mm (20) PD1569 2.5mm (20)
--	---

E-CLIP

	PD1191 M3x 8mm (20) PD1192 M3x 10mm (20) PD1547 M2x 6mm (20) PD1548 M2x 8mm (20) PD1550 M2.6x16mm (20) PD1711 M2.6x12mm (20)
--	---

CT PHILLIP MACHINE SCREW

	PD1559 M3x 10mm (20)
--	----------------------

BTW PHILLIP TAP SCREW

	PD0971 M3 (20) PD1563 M5 (20)
--	----------------------------------

LOCK NUT

	PD1194 M3x 14mm (20) PD1339 M3x 20mm (20) PD1543 M3x 18mm (20) PD1545 M3.5x 10mm(20)
--	---

SK H.M SCREW

	PD1546 M5x 10mm (20)
--	----------------------

FLAT HEAD SOCKET SCREW

	PD1561 M3 (20) PD1562 M4 (20)
--	----------------------------------

LOCK NUT WITH FLANGE

	PD1532 M3x 8mm (20) PD1533 M3x 10mm (20) PD1534 M3x 12mm (20) PD1535 M3x 14mm (20) PD1536 M3x 16mm (20) PD1537 M3x 20mm (20) PD1595 M3x 23mm (20) PD1596 M3x 32mm (20) PD1599 M3x 30mm (20)
--	---

BT PHILLIP MACHINE SCREW

	PD1649 ϕ 5mm (20) PD1709 ϕ 3mm (20)
--	--

WASHER

NUT

	PD1710 ϕ 15mm (20)
--	-------------------------

"C" CLIP

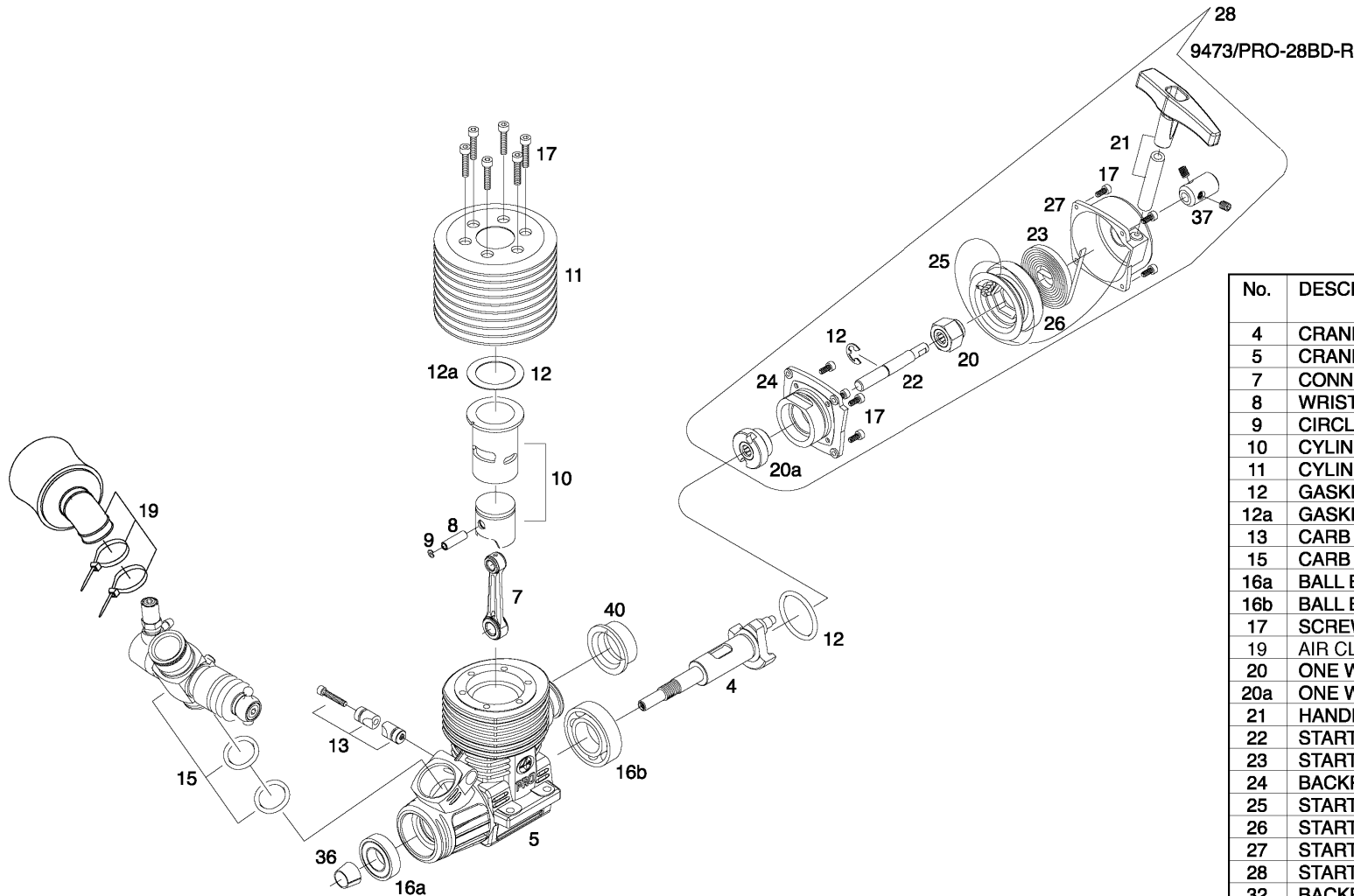
BODY CLIP

	PD1712 M2.6x 8mm (20)
--	-----------------------

BT PHILLIP TAP SCREW

	PD1713 BD0664 (20)
--	--------------------

9473 PRO-28BD-R PARTS LIST



No.	DESCRIPTION	9473 PRO-28BD-R
4	CRANKSHAFT	AA2045
5	CRANKCASE	AN2036
7	CONNECTING ROD	AN0776
8	WRIST PIN ASSEMBLY	AA2046
9	CIRCLIP	AA0351
10	CYLINDER & PISTON	AN2042
11	CYLINDER HEAD	AA2049-R
12	GASKET SET	PN0249
12a	GASKET	AA2047-1 (0.1mm)
13	CARB RETAINING BOLT	AN0932-1
15	CARB ASSEMBLY	9745S
16a	BALL BEARING	AMV607Z
16b	BALL BEARING	AMV6901X
17	SCREW SET	PN0060
19	AIR CLEANER SET	9708B
20	ONE WAY CLUTCH SET	AN0992
20a	ONE WAY CLUTCH SET	AN0990
21	HANDLE SET	PN0233
22	STARTING AXLE	AA0995
23	STARTING SPRING	AA0994
24	BACKPLATE	AN2039
25	STARTING WHEEL WIRE	AA0972
26	STARTING WHEEL	AA0097
27	STARTING WHEEL COVER	AN0993
28	STARTING SET	PN0252
32	BACKPLATE SET	PN0253
33	STARTING COVER SET	PN0236
36	FLYWHEEL COLLET	AD2555
37	STARTING COUPLING	PV0026
40	EXHAUST COUPLER	PN0204



MTA-4 1/8 4WD NITRO MONSTER TRUCK SPARE PARTS

PART#	DESCRIPTION	NOTE
9708B	AIR FILTER,21 BLACK	
AN1771	FOAM FILTER	
AD2445	CLUTCH SPRING (3),21	
AD2446	CLUTCH SHOE (3),21	
AD2538	CLUTCH NUT,21	
AD2555	FLYWHEEL COLLET,21	
AN0747	FOAM FILTER (3), 1/8	
PD0670	BT H.M SCREW (20),M3X14	
PD0673	BT H.M SCREW (20),M3X20	
PD0674	BT H.M SCREW (20),M3X22	
PD0677	CT H.M SCREW (20),M3X8	
PD0678	CT H.M SCREW (20),M3X10	
PD0679	CT H.M SCREW (20),M3X12	
PD0681	CT H.M SCREW (20),M3X16	
PD0871	COUPLER TUBE	
PD0961	SET SCREW (20),M3X3	
PD0962	SET SCREWS (20), M4X3	
PD0971	LOCK NUT (20),M3	
PD0976	E-CLIP (20),2MM	
PD1035	BT HEX MACHINE SCREW (20), 3X10MM	
PD1045	E-CLIP (20), 5MM	
PD1191	CT P.M. SCREW (20),M3X8	
PD1192	CT P.M. SCREW (20),M3X10	
PD1194	SK H.M SCREW (20),M3X14	
PD1227	MANIFOLD SPRING,MTA4	
PD1339	SK H.M SCREW (20),M3X20	
PD1436	BEARING SET,MTA4	
PD1437	2 SPD ONE WAY HUB,MTA4	
PD1438	2 SPD MAIN GEARS,MTA4	
PD1439	SUPPORT PIN&RING,MTA4	
PD1440	2 SPD CLUTCH HUB,MTA4	
PD1441	2 SPD SHAFT,MTA4	
PD1442	CTR TRANS SHIM&CLIP,MTA4	
PD1444	FWD/REV DRIVE GEARS,MTA4	
PD1446	FWD/REV SHIFT GEARS,MTA4	
PD1447	FWD/REV CLUTCH HUB,MTA4	
PD1448	FWD/REV MAIN SHAFT,MTA4	
PD1449	REV IDLE GEAR&SHAFT,MTA4	
PD1450	SHIFT LEVER,MTA4	

PART#	DESCRIPTION	NOTE
PD1451	REV GEAR/SHIFT FORK MNT	
PD1452	BEVEL GEAR SET,MTA4	
PD1453	SLIPPER SHAFT,MTA4	
PD1454	SLIPPER HUB,MTA4	
PD1455	SLIPPER RING,MTA4	
PD1456	MAIN SPUR GEAR,52T MTA4	
PD1457	SLIPPER FRICTION PEGS,MTA4	
PD1458	SLIPPER HARDWARE,MTA4	
PD1459	CTR TRANSMISSION CASE,MTA4	
PD1460	CTR TRANS CASE SCREWS,MTA4	
PD1461	BRAKE CAM & HARDWARE,MTA4	
PD1462	BRAKE PADS & SCREWS,MTA4	
PD1463	BRAKE DISCS - MTA4	
PD1464	F/R DRIVE CVA	
PD1465	F/R DRIVE INPUT CUP	
PD1467	F DRIVE / DISC BRAKE HUB	
PD1468	REAR DRIVE OUTPUT CUP	
PD1469	F/R CVA REBULID KIT	
PD1471	ASSEMBLED SHOCK (2),MTA4	
PD1472	SHOCK REBUILD KIT (2),MTA4	
PD1473	SHOCK SPRING (4),MTA4/BL	
PD1474	SHOCK SPRING (4),MTA4/GL	
PD1475	SHOCK SPRING (4),MTA4/RED	
PD1476	SHOCK SPRING (4),MTA4/CU	
PD1478	SHOCK ENDS,MTA4	
PD1479	SHOCK TOP MOUNTS,MTA4	
PD1480	FUEL TANK,MTA4	
PD1481	DIFF SHAFT/PINION,MTA4	
PD1482	DIFF SET,MTA4	
PD1483	DIFF CASE/BULKHEAD,MTA4	
PD1487	ORING,TUBE&OUTLET,MTA4	
PD1488	FWD/REV CLUTCH HOU.,MTA4	
PD1489	CHASSIS,MTA4	
PD1490	CHASSIS GUARD&COVER,MTA4	
PD1491	ROLL BAR,MTA4	
PD1492	ROLL BAR MOUNTS,MTA4	
PD1493	UP SUSP. ARM MOUNTS,MTA4	
PD1494	FR BULK / CHASSIS MOUNT,MTA4	
PD1497	SUSP. HINGE PIN SET,MTA4	

PART#	DESCRIPTION	NOTE
PD1498	KNUCKLE / HUB,MTA4	
PD1499	ADJUST BALL (4),10.8MM	
PD1500	BALL TYPE UNIVERSAL,MTA4	
PD1501	STEEL PIN (4),2.5X5MM	
PD1502	WHEEL HEX DRIVE (4),MTA4	
PD1503	TURNBUCKLE,4X110MM	
PD1504	F/R TURNBUCKLE END,MTA4	
PD1505	TURNBUCKLE,M4X126MM	
PD1507	BELLCRANK PL. PARTS,MTA4	
PD1508	BELLCRANK POST&BUSH.,MTA4	
PD1509	BELLCRANK HARDWARE,MTA4	
PD1510	FR SKID PLATE,MTA4	
PD1511	FR BUMPER & BRACE,MTA4	
PD1512	FR&RR BUMPER,MTA4	
PD1513	RR BUMPER & BRACE,MTA4	
PD1514	RR SKID PLATE,MTA4	
PD1515	FR SHOCK TOWER,MTA4	
PD1516	RR SHOCK TOWER,MTA4	
PD1517	BODY MOUNTS&POSTS,MTA4	
PD1518	RR CLIP&FLAG MOUNT,MTA4	
PD1519	RR FLAG & POSTS,MTA4	
PD1520	ENGINE MOUNT,MTA4	
PD1521	3-SHOE FAN FLYWHEEL,21	
PD1522	CLUTCH HARDWARE,21	
PD1524	RADIO TRAY,MTA4	
PD1525	SERVO SAVER,MTA4	
PD1526	SERVO HORNS,MTA4	
PD1527	GEAR SHIFT LINKAGE,MTA4	
PD1528	THRO./ BRAKE LINKAGE,MTA4	
PD1529	TIRES (2),MTA4	
PD1530	WHEELS (2),MTA4	
PD1532	BT P.M. SCREW (20),M3X8	
PD1533	BT P.M. SCREW (20),M3X10	
PD1534	BT P.M. SCREW (20),M3X12	
PD1535	BT P.M. SCREW (20),M3X14	
PD1536	BT P.M. SCREW (20),M3X16	
PD1537	BT P.M. SCREW (20),M3X20	
PD1543	SK H.M SCREW (20),M3X18	
PD1545	SK H.M SCREW (20),M3.5X10	



MTA-4 1/8 4WD NITRO MONSTER TRUCK PARTS LIST

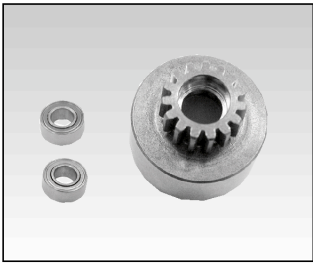
PART#	DESCRIPTION	NOTE
PD1546	SK H.M SCREW (20),M5X10	
PD1547	CT P.M. SCREW (20),M2X6	
PD1548	CT P.M. SCREW (20),M2X8	
PD1550	CT P.M. SCREW (20),M2.6X16	
PD1557	BODY POST MT. SCREWS,MTA4	
PD1559	BTW P.T. SCREW (20),M3X10	
PD1561	LOCK NUT (20),FLANGE M3	
PD1562	LOCK NUT (20),FLANGE M4	
PD1563	LOCK NUT (20),FLANGE M5	
PD1565	SET SCREW (20),4X5MM	
PD1566	SET SCREW (20),4X8MM	
PD1569	E-CLIP (20),2.5MM	
PD1570	BALL BEARING(2),10X19X5	
PD1571	BALL BEARING(2),8X16X5	
PD1572	BALL BEARING(2),6X12X4	
PD1573	BALL BEARING(2),5X11X4	
PD1574	BALL BEARING(2),5X10X4	
PD1575	UNIV. REBUILD KIT,MTA4	
PD1577	AXLE BEARING SAPCER	
PD1593	SHOULDER SCREW,M3X22	
PD1594	FUEL PRIMER PUMP	
PD1595	BT H.M SCREW(20),M3X23	
PD1596	BT H.M SCREW(20),M3X32	
PD1597	NUT(20),M2	
PD1598	SET SCREWS(20), M4X4	
PD1599	BT H.M SCREW(20),M3X30	
PD1600	LOCK WASHER(20),5MM	
PD1649	WASHER (20), 5MM	

PART#	DESCRIPTION	NOTE
PD1650	FUEL TANK ACC, MTA	
PD1709	WASHER (20), 3MM	
PD1710	C-CLIP(20), 15MM	
PD1711	CT P.M SCREW(20),M2.6X12	
PD1712	BT P.T. SCREW(20),M2.6X8	
PD1713	R CLIPS(20)	
PD1714	NUT WRENCH,5.5/7/8MM	
PD1715	BALL HEX DRIVE SHAFT,6MM	
PD1740	DRIVE CUP SET SCREW	
PD1743	MGT SHOCK BODY AND CAP	
PD1745	MGT UPR SUSPN ARMS(2)	
PD1746	MGT LWR SUSPN ARMS(2)	
PD1749	MGT DIFFERENTIAL OUTDRIVES AND GASKETS	
PD1751	CLUTCH BELL,16T	
PD6330	PRINTED BODY W/D(L)S28	
PD6333	PRINTED BODY W/D(O)S28	
PD6335	CLEAR BODY W/D,MTA4 S28	
PD6336	MUFFLER MOUNT WIRE/R,MTA SPT	
PD6340	2SPEED PINON&SHAFT SET	
PD6341	DIFF GEARS	
PD6342	DIFF HOUSING	
PD6343	DIFF SPUR	
PD6344	CTR TRANS PINS,MTA4	
PD6346	2 SPD DRIVE / MAIN GEARS, MTA4	
PD6347	DRIVE PINION SHAFT, MTA4	
PD6348	GEAR BOX SET, MTA4	
PD6349	MANIFOLD, MTA4	
PD6350	MUFFLER	

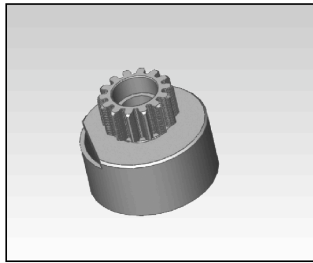
OPTIONAL PARTS LIST

PART#	DESCRIPTION	NOTE
AA2110-R	CYLINDER HEAD,28B-R,OP	
PD0470	CLUTCH BELL, 15T	
PD1301	AL LOCK NUT/BLUE, M3	
PD1304	AL LOCK NUT/BLUE, M4	
PD1523	CLUTCH BELL, 14T	
PD1582	SERVO SAVER,HITECH	
PD1583	SERVO SAVER,JR	
PD1741	SHOCK CAPS, MTA	
PD1752	CLUTCH BELL, 17T	
PD1753	CLUTCH BELL, 18T	
PD1754	SPUR GEAR, 49T	
PD1755	SPUR GEAR, 46T	
PD1756	STEERING LINK ROD- TI	
PD1757	REAR LINK ROD- TI	
PD1759	OPT CHASSIS/BLUE, MTA	
PD1761	AL LOCK NUT/BLUE, M5	
PD1762	OPT STEERING KIT,MTA	
PD1763	OPT. STEERING RACK/ARM	
PD1764	SERVO SAVER HUB/SPRING	
PD1765	OPT STEERING HARDWARE	
PD1766	WHEEL HEX DRIVES, BLUE	
PD1767	AL SHOCK BODIES,MTA	
PD1771	OPT BRAKE DISC, MTA	
PD1774	NO REVERSE KIT,MTA	
PD6325	MTA MANIFOLD, SIDE	
PD6331	MTA MUFFLER, SIDE	
PD6332	SIDE EXHAUST WIRE	
PD6337	STEERING BUSHING, (4)	
PD6338	SHOCK BOTTOM, MTA	
PD6339	METAL SHOCK SET	

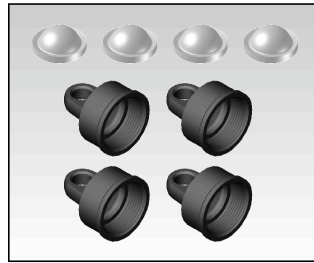
MTA-4 MONSTER TRUCK OPTIONAL PARTS LIST



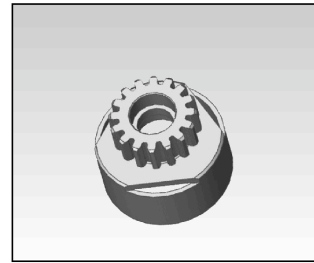
PD0470 CLUTCH BELL 15T



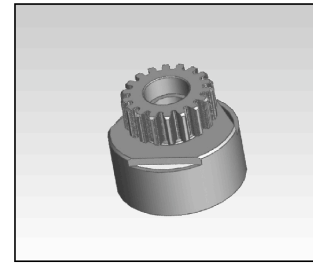
PD1523 CLUTCH BELL 14T



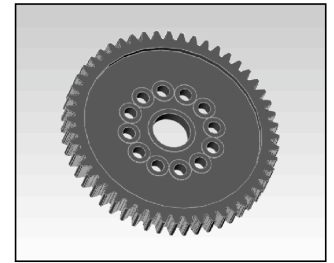
PD1741 SHOCK CAPS, MTA



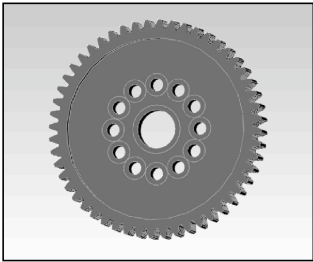
PD1752 CLUTCH BELL 17T



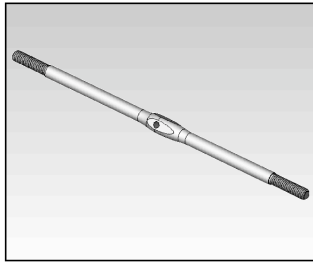
PD1753 CLUTCH BELL 18T



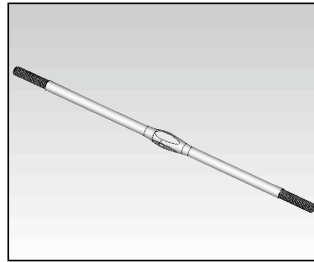
PD1754 SPUR GEAR 49T



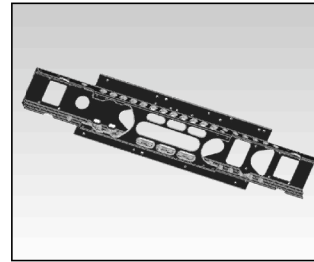
PD1755 SPUR GEAR 46T



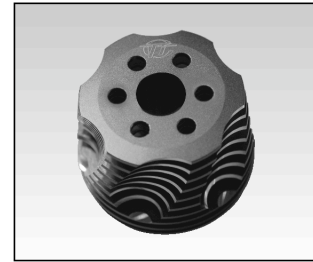
PD1756 TI ALLOY STEERING LINK ROD



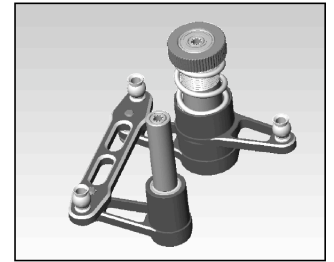
PD1757 TI ALLOY REAR LINK ROD-



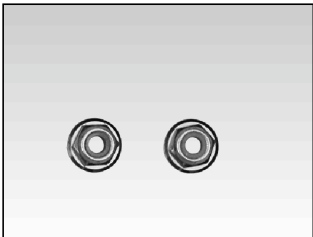
PD1759 OPTIONAL MACHINED CHASSIS



AA2110-R CYLINDER HEAD, PRO 28BD-R, OP



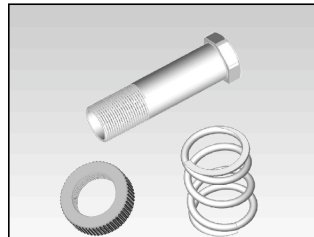
PD1762 OPTIONAL STEERING KIT



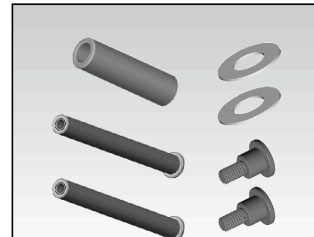
PD1761 5MM LOCK NUT, BLUE ALUM
PD1304 4MM LOCK NUT, BLUE ALUM
PD1301 3MM LOCK NUT, BLUE ALUM



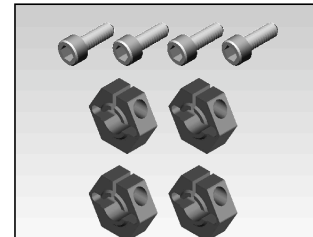
PD1763 OPT. STEERING RACK/ARM



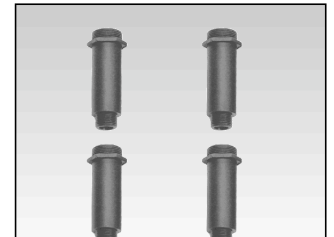
PD1764 SERVO SAVER HUB/SPRING



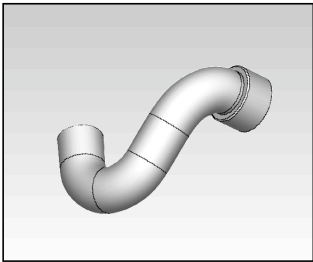
PD1765 OPT STEERING HARDWARE



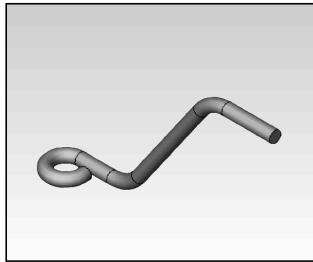
PD1766 Wheel Hex Drives, blue



PD1767 METAL SHOCK BODY



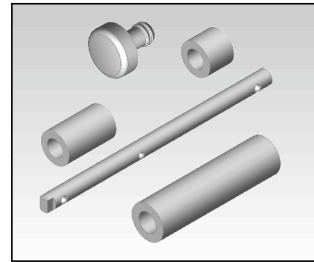
PD6325 SIDE MOUNT EXHAUST MANIFOLD



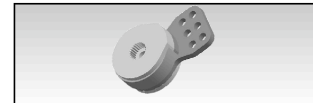
PD6332 SIDE EXHAUST NUFFLER MOUNT



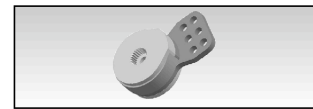
PD1771 VENTILATED BRAKE DISC



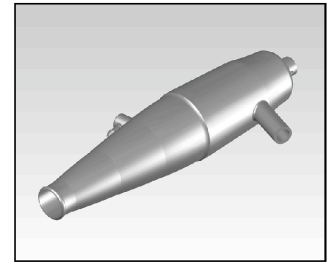
PD1774 REVERSE ELIMINATION KIT



PD1582 SERVO SAVER, HITEC



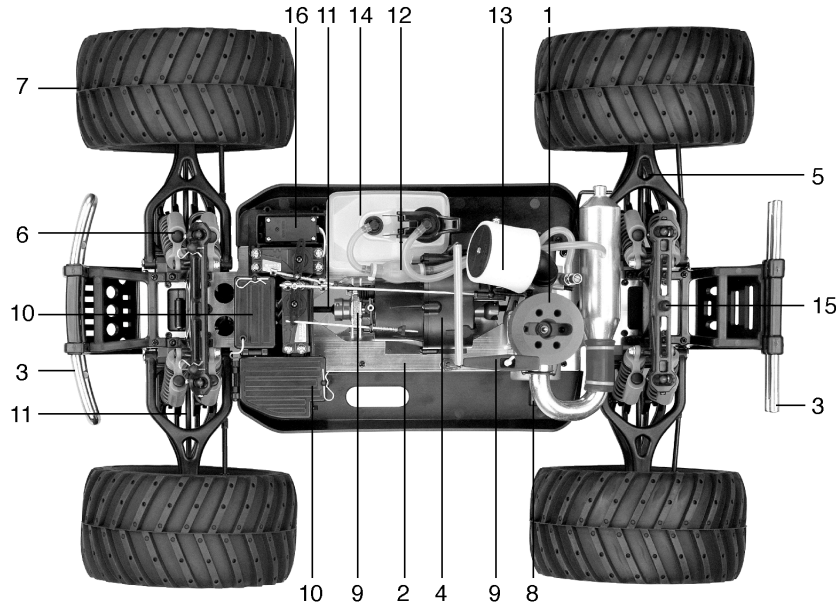
PD1583 SERVO SAVER, JR



PD6331 MTA MUFFLER, SIDE



1/8 4WD NITRO MONSTER TRUCK



- 1) PRO-28BD-R rear exhaust engine provides plenty of horsepower.
- 2) Rigid, extruded aluminum channel chassis with front 9 degree kick-up
- 3) High impact absorbing front and rear bumpers.
- 4) 2 speed forward and reverse transmission
- 5) Extra long travel suspension arms
- 6) 8 Oil-Filled Type shock absorbers
- 7) Realistic styled oversize monster truck wheels and tires
- 8) Dual-function starting system (pull start and hex start)
- 9) Massive single-disc brake system
- 10) One-piece electronic equipment container unit.
- 11) All-Metal CVA universal type shafts
- 12) Fuel line with primer pump
- 13) Double high density annular foam air filter
- 14) Large, non-stopping fuel tank features a dual fuel pick-up system.
- 15) Body easy & quickly open system.
- 16) High torque steering servo

INCLUDED



3CH PISTOL RADIO



THUNDER TIGER PRO-28BD-R ENGINE



THUNDER TIGER PRO-28BD-R ENGINE

Specification:

- Overall Length: 558mm / 22in.
- Overall Height: 273mm / 10.7in.
- Overall Width: 438mm/17.2in.
- Wheelbase: 368mm / 14.5in.
- Max Ground Clearance: 108mm / 4.25in
- Front Track Width: 436mm / 17.2in
- Rear Track Width: 436mm / 17.2in
- Weight (RTR): 5443g / 12lb.
- Wheel: DIA. 174mm / 6.85in
- Power Plant: PRO-28BD-R Rear Exhaust Engine
- Starter: Dual-Function Starting System
- Chassis: One-Piece Extruded Aluminum Channel Type
- Transmission: 2 Speed Forward and Reverse
- Drive Axle: CVA Universal Type
- Suspension: Upper/Lower A-Arm with Pivot Ball
- Shock: 8 Oil-Filled Type
- Front Kick Up Angle: 9°

ACCESSORIES

Glow Starters



- No.2152 1.8AH Long Glow Starter w/240V Chg
- No.2151 1.8AH Long Glow Starter w/220V Chg
- No.2150 1.8AH Long Glow Starter w/110V Chg

Starters



- No.2674 1.2V H.D. 90 starter
- No.2675 1.2V H.D. 180 starter

6mm Starter Extension

No.3801



5-Way Wrench

No.1110



- No.1261 600cc Fuel Bottle
- No.1266 300cc Fuel Bottle



- No.1103 Hex Driver Set