



# Rescue Kit DJI S1000

User's Guide

**Please read carefully this manual before using your equipment for the first time.**

Thanks for having chosen an Opale-Paramodels product.

We truly believe this radio-controlled rescue system is going to give you the most advanced safety technology on your multicopter. This user's guide content includes all the informations you need to get your system read and to ensure you will take good care of it. A good knowledge of your equipment will allow you to safely make the most of its performances!

Thanks for giving this manual to the new owner in case you decided to sell you radio-controlled paraglider.

## Safety information

You should be properly insured according to the country regulation you are using our equipment in. You hereby accept the inherent risk of flying radio-controlled models. Using our equipment in a bad way may increase risks. Neither Opale-Paramodels nor any other seller will be liable for any damage caused by any accident whatever the circumstances are. The way our equipment is used is incumbent upon the final user, including towards the law.

### Summary

1. Kit contents
2. Preparing the rescue parachute
3. Assembling of the ejection system and installation of the parachute
4. How to package the parachute

## 1. Kit Contents



- 1x Ejection System for DJI S1000
- 3x Aramid straps 800mm length
- 1x Ejection Strap
- 3x Rubbers
- 1x Pod L 2
- 1x 6,4kg.cm servo
- 1x Rescue Parachute 12sqm

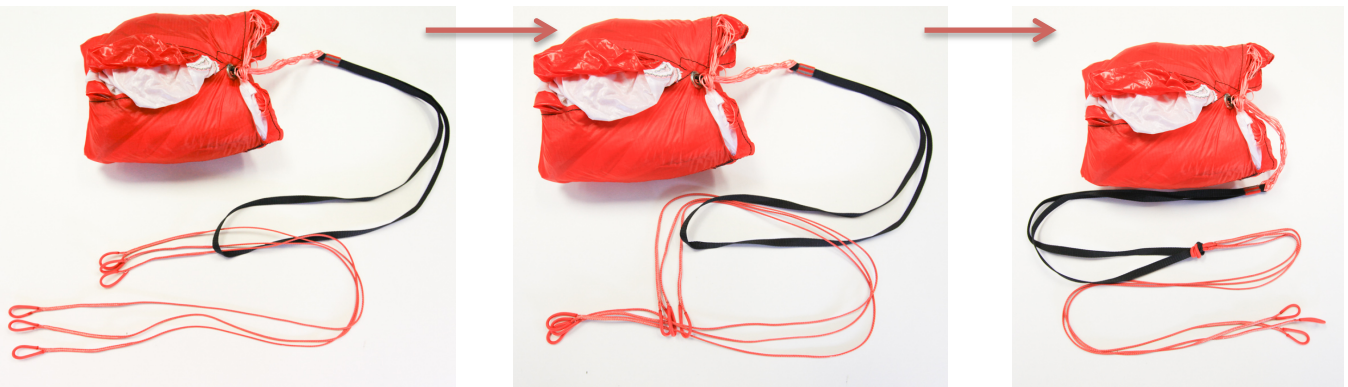
ref OP17703  
 ref STRS1000  
 ref STRS1000  
 ref OP17304  
 ref OP16721  
 ref OP17105

## 2. Preparing the rescue parachute

Bring the parachute and 3x Aramid straps 800mm.

Assembly the 3x 800mm straps as show on the pictures bellow

One time it's done, your rescue is ready to be placed on the ejection system.



### 3. Assembling of the ejection system and installation of the parachute

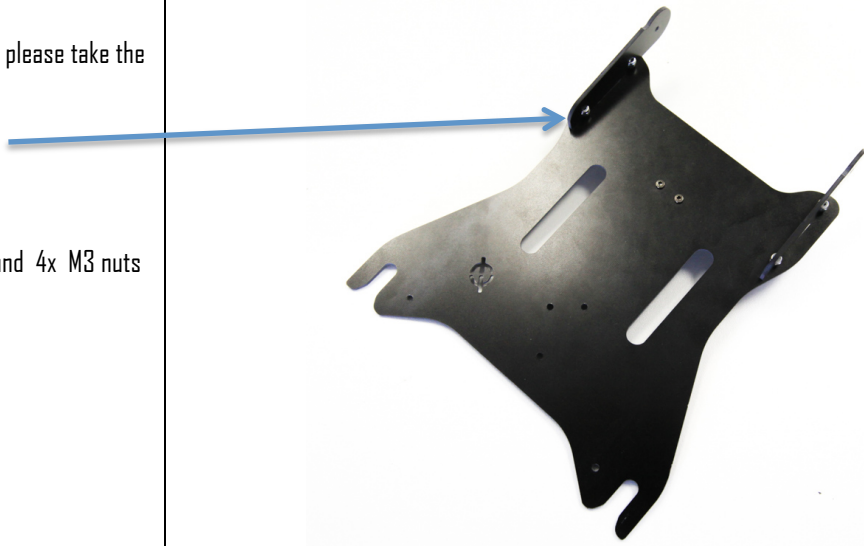
Remove the clip part from the original plate and screw it on the connexion plate of the rescue system. Use the 2 original screws.



In the package who contain all the parts, please take the followings items :

- 2x side frames
- Main frame

Screw them with 4x CHC M3-8 screws and 4x M3 nuts



Install the servo plate which is provided with the kit. Tighten it with 3x screw CHC M3-25 and 3x M3 nuts. Connect the servomotor to your receiver. Use a 2 position switch with the following positions :

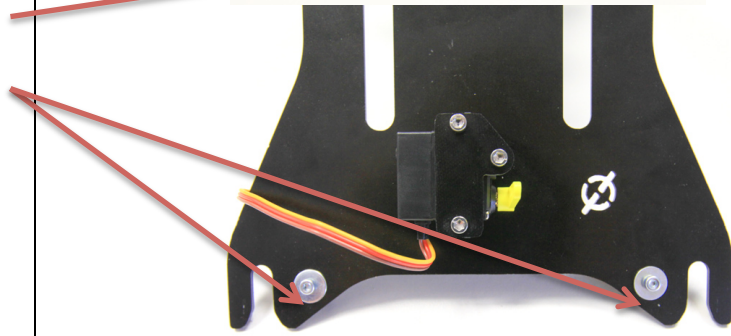
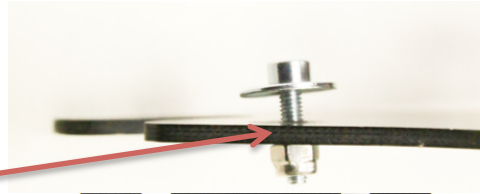
- Arm up (system locked)
- Arm horizontal / down (system opened)



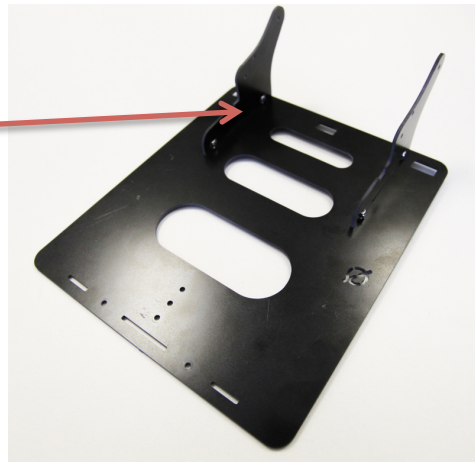


After take 2x screw CHC M3-12, 2x M3 nuts and 2x M3 washer

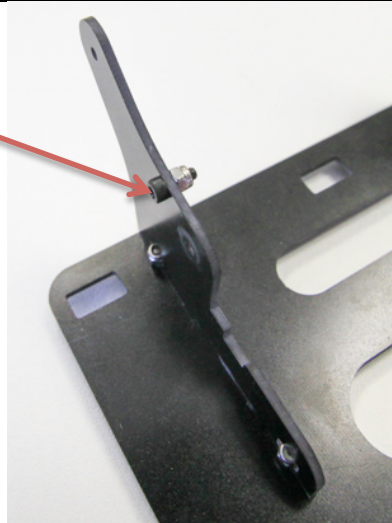
Mount the screw like a the picture but do not tighten completely.



Assembly the side parts from the ejection plate where will be place the rescue foil.  
For each parts, use 2x CHC M3-8 screw and 2x M3 nut.

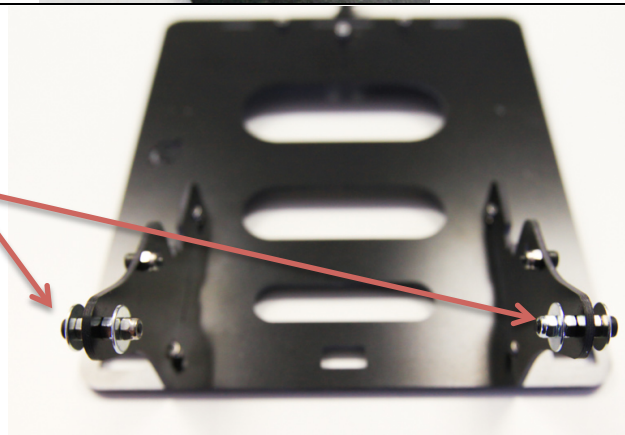
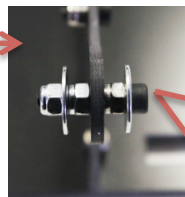


On the side parts, use and fix a CHC M3-8 as pictured.

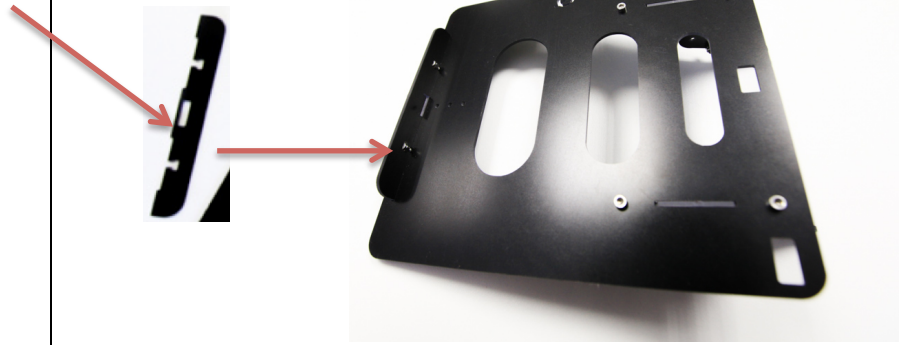


Use a CHC M3-12 screw, a M3 washer and set a M3 nut on half length of the screw.

Insert it on the support plate and lock it by an other M3 nut.

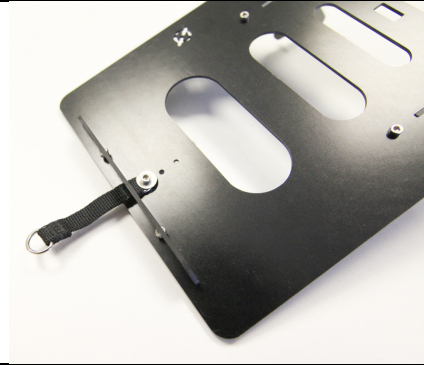


Assembly this small plate and the ejection plate with 2x CHC M3-8 and M3 nuts.



Set the ejection strap by the small ring on the ejection plate and take care to pass it under the plate previously fixed

Use a CHC M3-8, a M3 washer and a M3 nut.

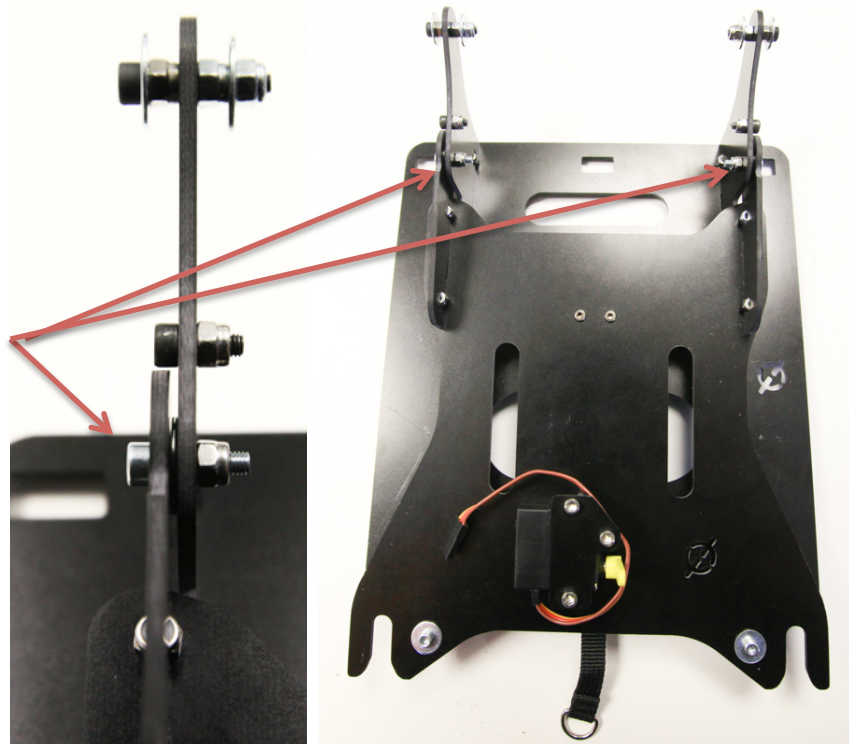


Bring the ejection plates and the main frame.

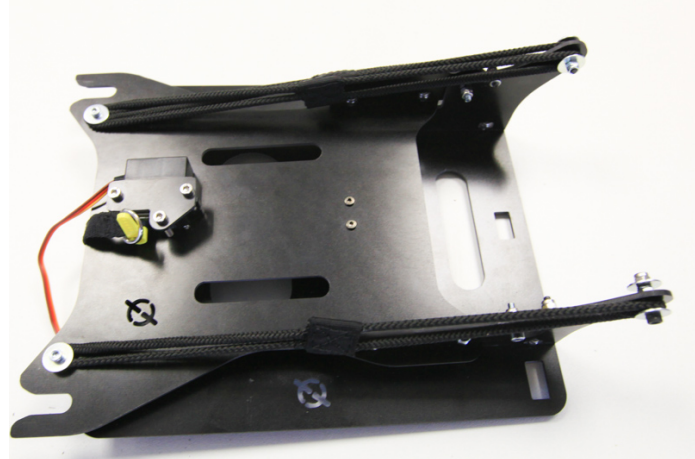
With a CHC M3-12 screw and a M3 washer, assembly these 2 parts like on the picture bellow. Insert a washer between both plates.

Do the same operation to the opposite side.

Use 2x M3 nuts to lock the screws. Do not tighten strongly in order to keep a free rotation of the system.



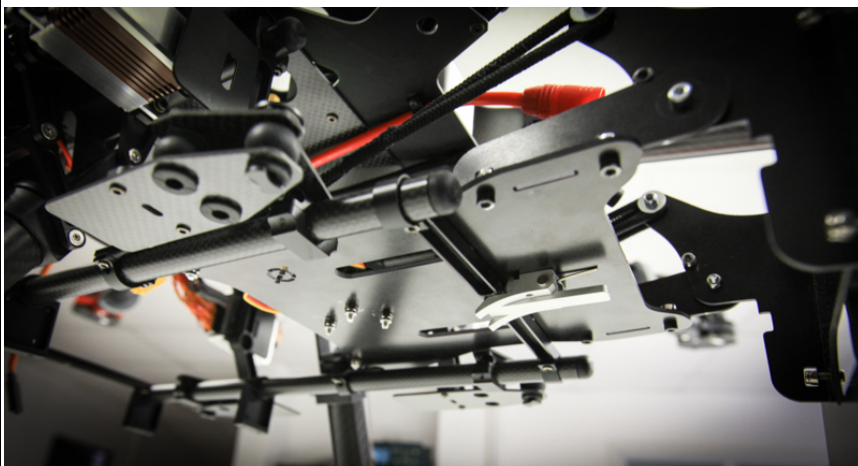
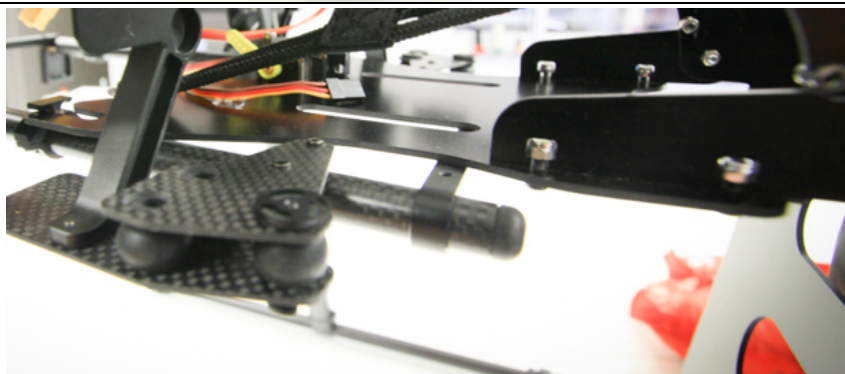
After, place the 3x rubbers as shown on the right picture.



One time the rubber is installed, bring the Pod L2 and set it on the ejection plate.



Place the ejection system on the machine so that it clips in place of the original battery support plate as shown in the photos against.



Bring the parachute which was prepared on the previous step.

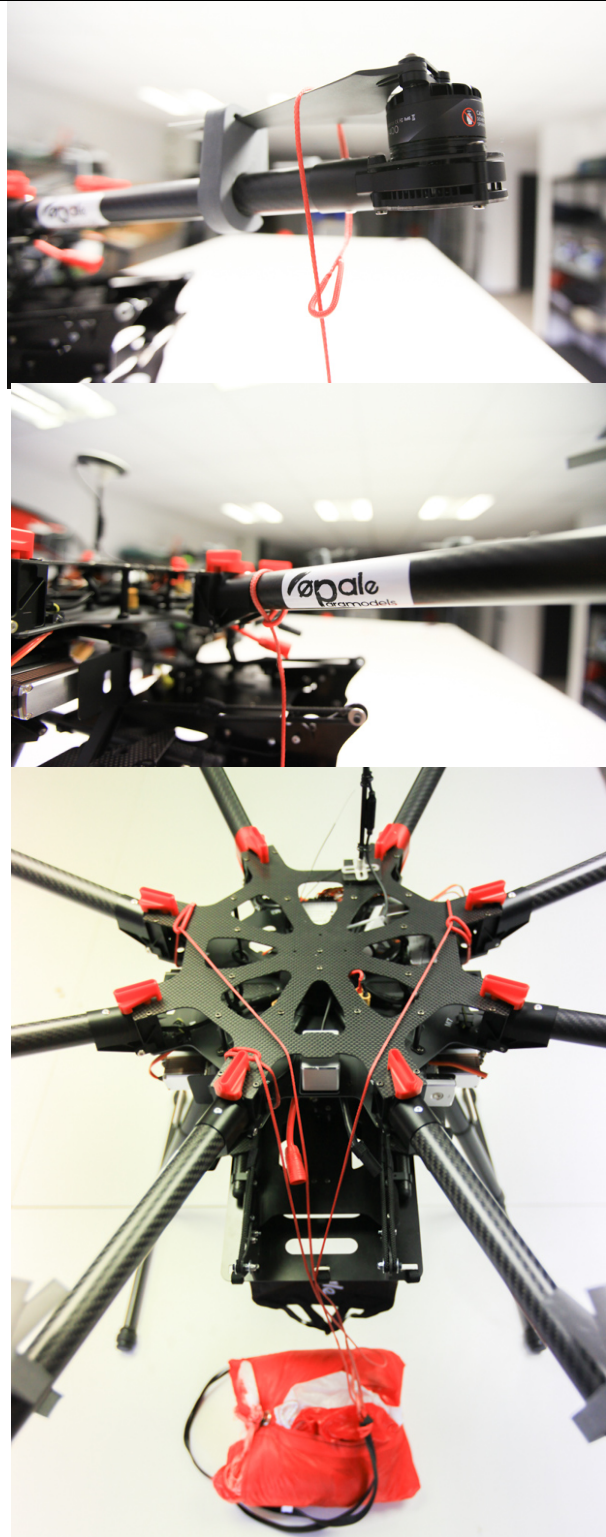
Make 3 loops with the extremities of the 800mm straps.





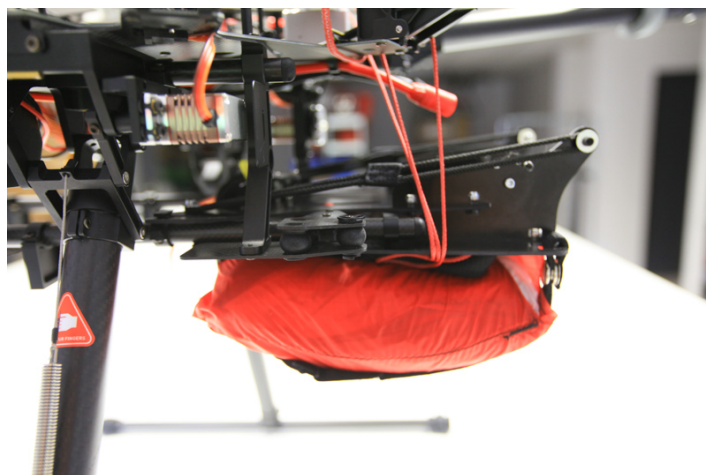
Then set the Aramid straps on three opposite arms of the copter.

Tighten the Aramid straps strongly



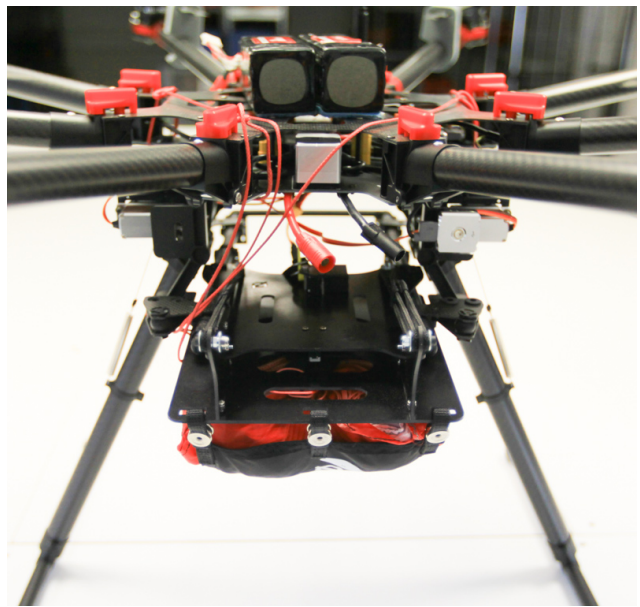
Place the straps by sides of the Ejection system in order to have a free ejection.

Then place the rest of the straps on the front of the ejection plate and after place the parachute on it.





Place the extracting Pod L2 over the parachute.  
Check that the straps are well placed by side of the system like shown on the picture.

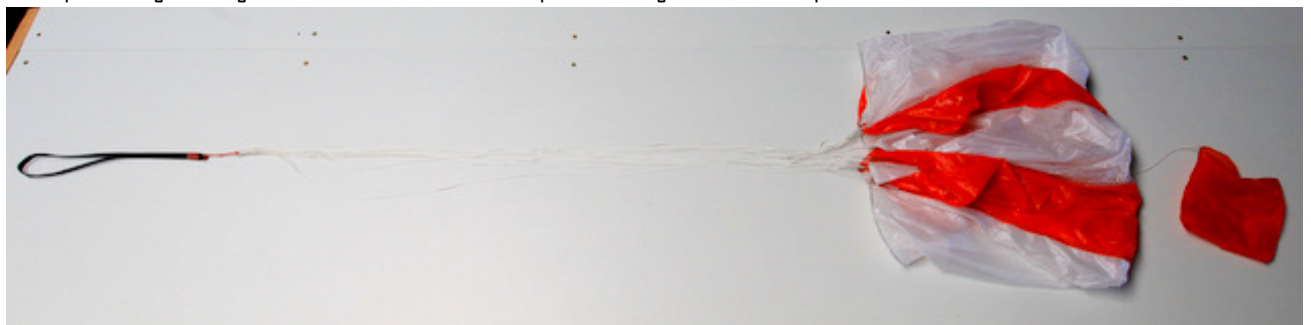


#### 4. How to package the parachute

It is really important that you properly fold the parachute every single time you use it to ensure it will be open quickly and be efficient the very next time you need it.

First, please spread the parachute and make sure no lines are tangled up, and then inflate it.

Then spread it again and gather all the lines. Hold them in position using some ballast if possible.



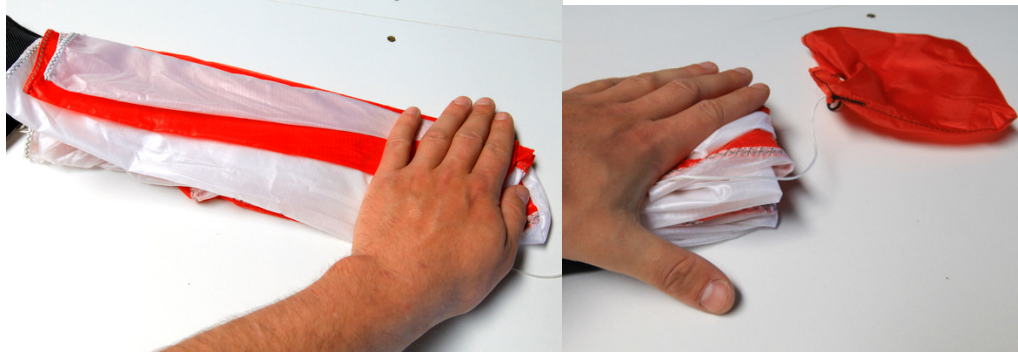
Separate every single fabric panel. Evenly distribute them to the right and the left (5 on each side).



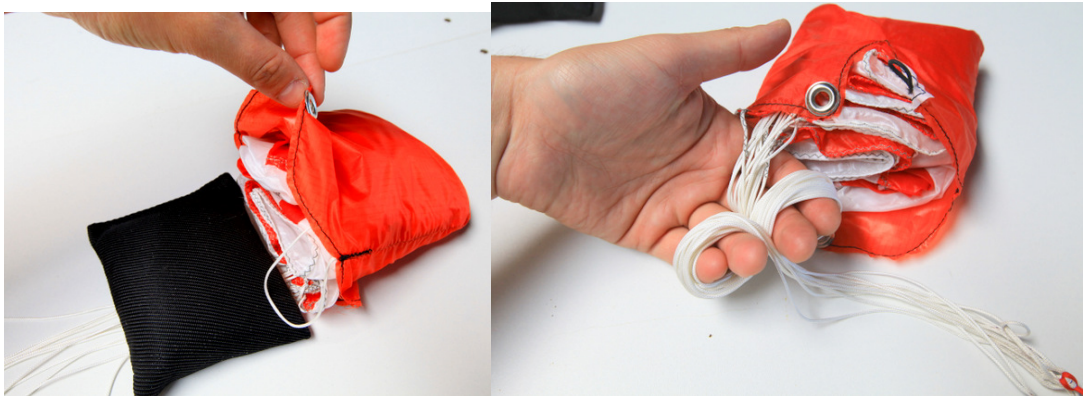
Then folds the panels the way shown on the picture below starting with the left panels, then do the exact same things for the right ones.



Now we have the short side of the parachute folded, it is now time to fold it 3 times to get it fit in the container.



The trailing edge of the parachute should be positioned on the opening side of the container.



Grab the lines and wind them round your fingers till it looks like an 8 in order to store the lines in the container. Then house the lines inside the container just in front of the parachute's trailing edge.



Use the black elastic loop to close the container, as shown below.



Once the container is closed, use 3 or 4 lines to fully make sure it will stay closed till you want it to open.



Please often check that the container is well closed and kind of locked thanks to the lines. Do not hesitate to ventilate and unfold your parachute if it is stored wet.